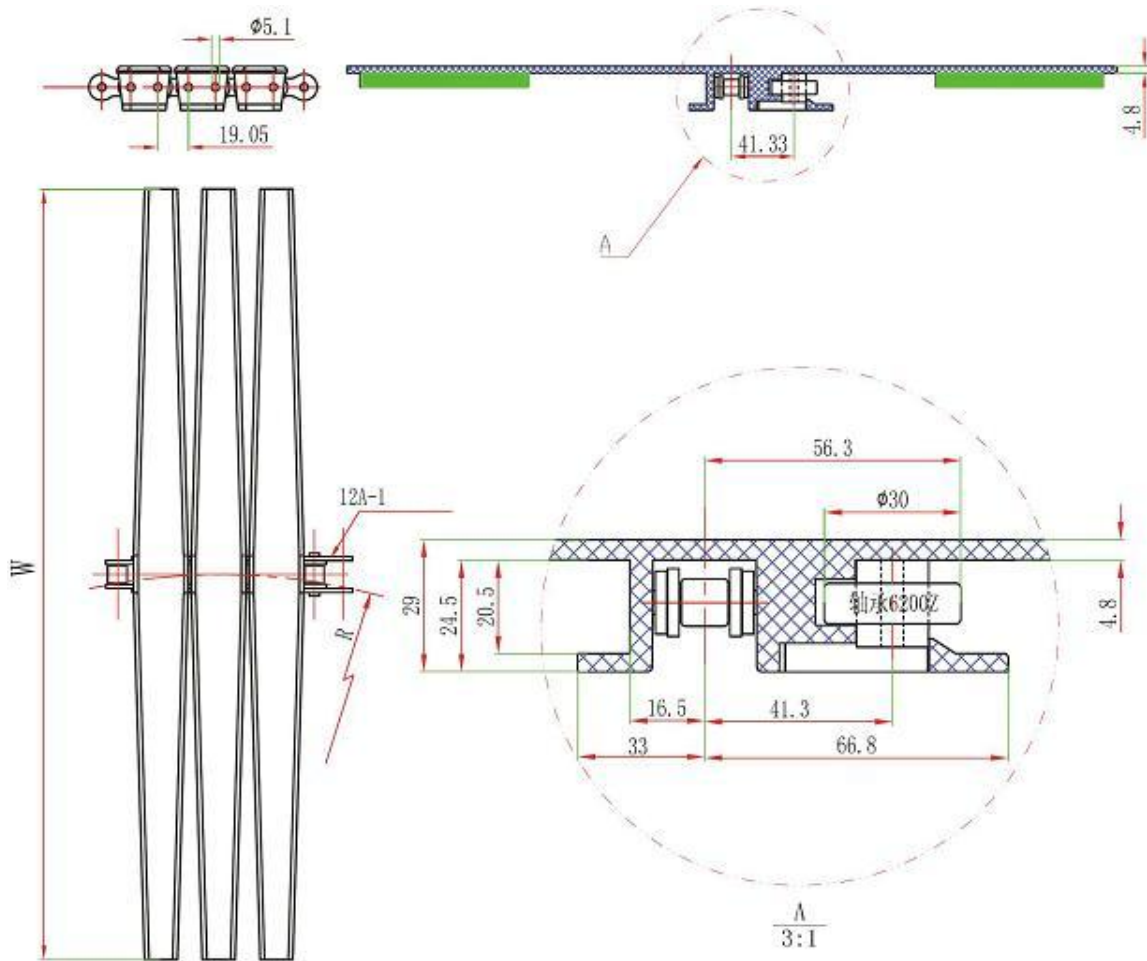


# 1873 Plastic snap-on sideflex chain with bearings

- Main application in spiral conveyors.
- Plates material: POM; color: coffee;
- Base chain: 12A roller chains, Material: Carbon steel or Stainless Steel;
- Max speed: 80m/min lubrication, 50m/min dry;
- Working load: 3200N (mat.: CS), 1600N (mat.: SS);
- Max conveying length: 30m (mat.: CS), 24m (mat.:SS);
- Supply unit: 1.524mtr (5ft);



sprocket P401



parts P306-332



wear strip P355-359



chain guide P343-354

Code		Plates width (mm)	Weight (Kg/m)	Backflex R (mm)	Min.Radius (mm)
CS	SS				
1873-K1600-Z	1873SS-K1600-Z	406	6.36	150	610
1873-K2000-Z	1873SS-K2000-Z	508	6.94	150	610