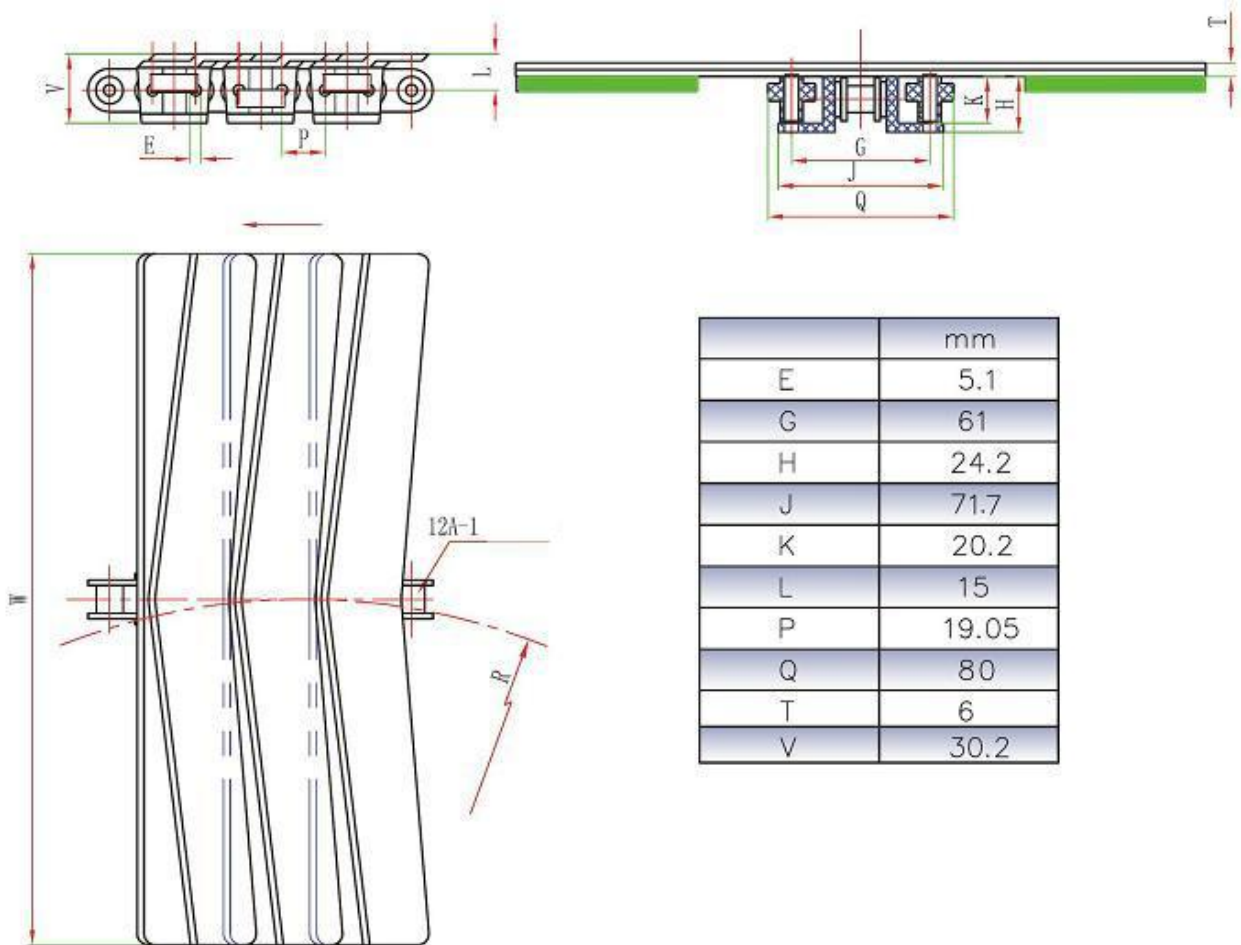


3873 Seamless Snap on Sideflex Chains with rollers

- Main application in catering industry sideflex conveyors;
- Plates material: POM; color coffee, temperature range: -30C°~90C°
- Roller base chains: standard 12A roller chains,
- Material: carbon steel or stainless steel
- Max speed: 50m/min with lubrication; 30m/min dry
- Working load: 1600N (mat.: CS), 1200N (mat.: SS)
- Max conveying length: 24m (mat.: CS), 18m (mat.:SS)
- Supply unit: 1.524mtr (5ft)



sprocket P401



parts P306-332



wear strip P355-359

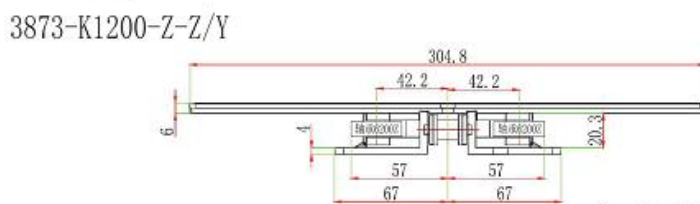
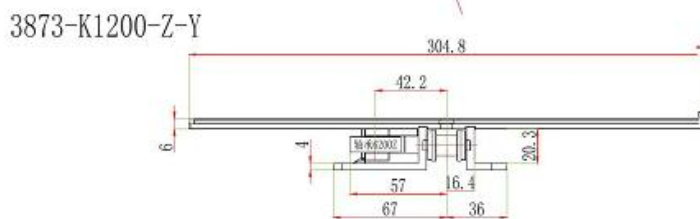
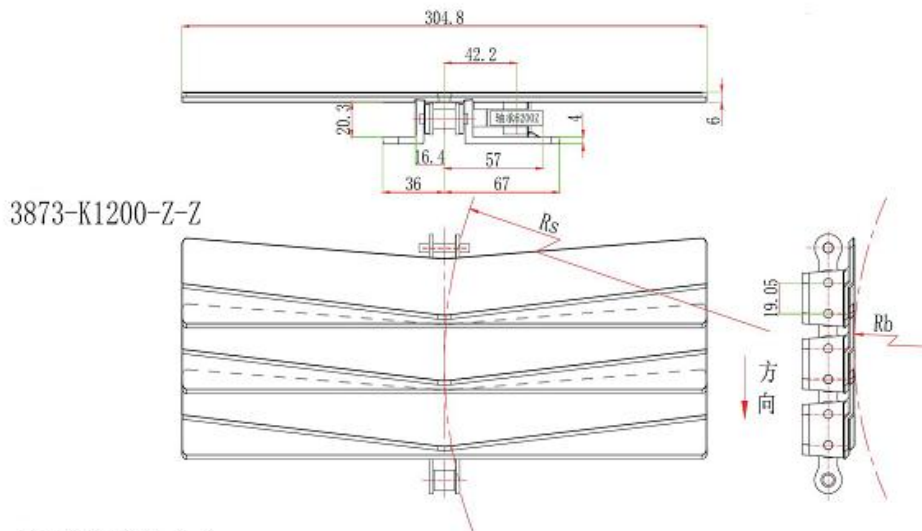


chain guide P343-354

Code		Plates width (mm)	Weight (Kg/m)	Backflex R (mm)	Min.Radius (mm)
CS	SS				
3873-K1200-G	3873SS-K1200-G	304.8	4.1	150	457

3873 Seamless Snap on Sideflex Chains with bearings

- Main application spiral conveyors;
- Plates material: POM; color blue/ coffee,temperature range: -30C°~90C°
- Roller base chains: standard 12A roller chains,
- Material: carbon steel or stainless steel
- Max speed: 50m/min with lubrication; 30m/min dry
- Working load: 1600N (mat.: CS), 1200N (mat.: SS)
- Max conveying length: 24m (mat.: CS), 18m (mat.:SS)
- Supply unit:1.524mtr (5ft)
- The bearing on the chain can choose right or left side.



sprocket P401



parts P306-332



wear strip P355-359



chain guide P343-354

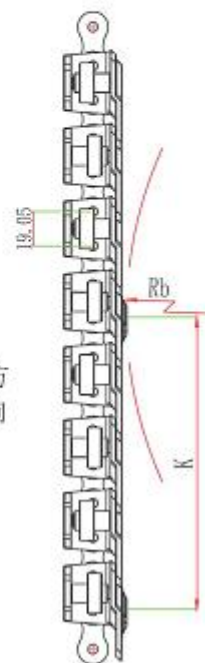
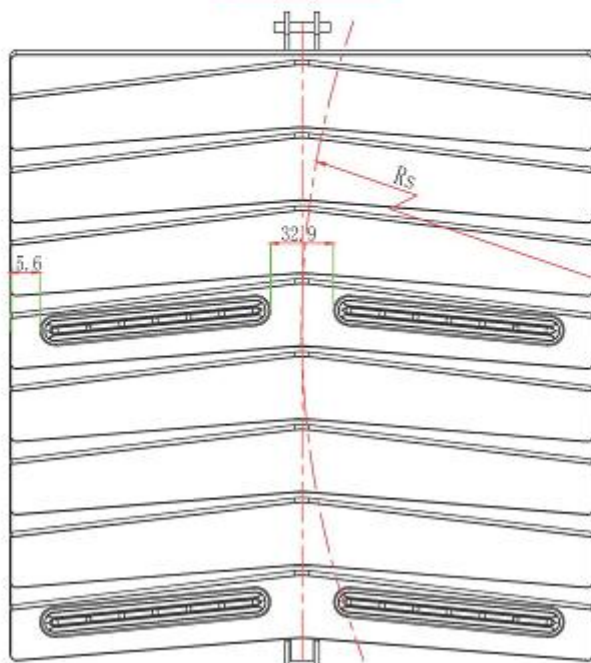
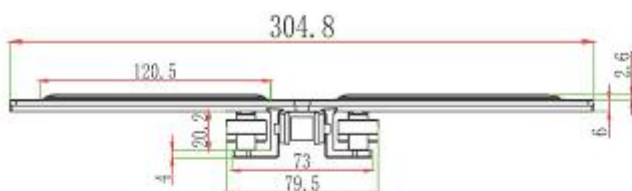
Code		Plates width (mm)	Weight (Kg/m)	Backflex R (mm)	Min.Radius (mm)
CS	SS				
3873-K1200-Z-Z	3873SS-K1200-Z-Z	304.8	5.66	150	500
3873-K1200-Z-Y	3873SS-K1200-Z-Y	304.8	5.66	150	500
3873-K1200-Z-Z/Y	3873SS-K1200-Z-Z/Y	304.8	5.66	150	500

3873 Seamless Snap on sideflex Chains with rubber top

- Main application in catering industry sideflex conveyors;
- Plates material: POM; color blue, rubber: orange;
- temperature range: $-30C^{\circ}\sim 80C^{\circ}$
- Rubber hardness: 65 ± 5 ; rubber distance $K=38.1*N$;
- Roller base chains: standard 12A roller chains,
- Material: carbon steel or stainless steel
- Max speed: 50m/min with lubrication; 30m/min dry
- Working load: 1600N (mat.: CS), 1200N (mat.: SS)
- Max conveying length: 24m (mat.: CS), 18m (mat.:SS)
- Supply unit:1.524mtr (5ft)



L	W	K
	304.8	



sprocket P401



parts P306-332



wear strip P355-359



chain guide P343-354

Code		Plates width (mm)	Weight (Kg/m)	Backflex R (mm)	Min.Radius (mm)
CS	SS				
3873-K1200-G	3873SS-K1200-G	304.8	4.1	150	500