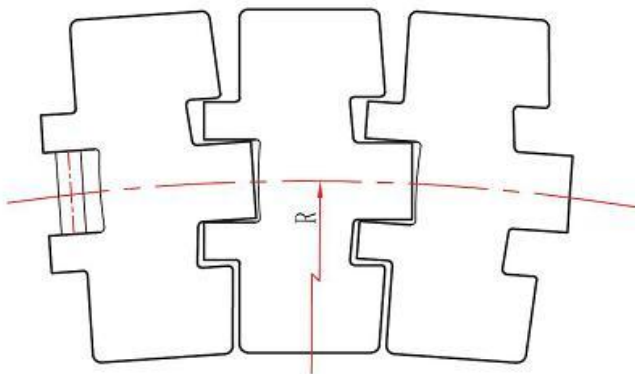
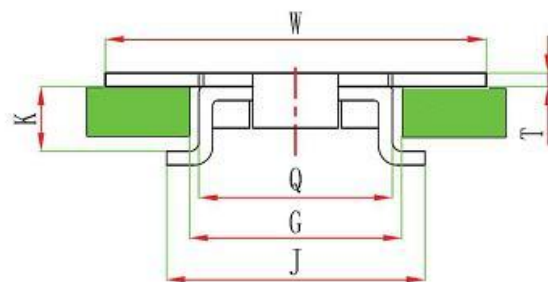
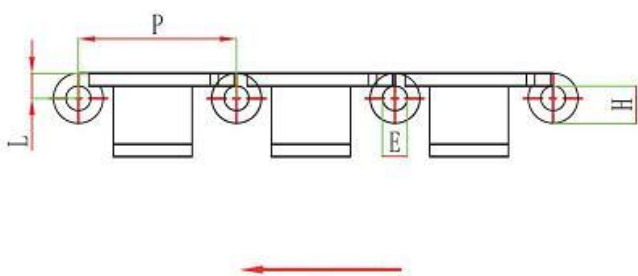


881TAB Stainless Steel sideflex chain

- Main Application: transportation for various of glass bottles, and heavy load items
- Material: Stainless steel
- Max.speed: 50m/min, lubrication, 30m/min, dry.
- Working load: 2250N, Max transportation length: 15m



	mm
E	6.35
G	44.5
H	10
J	56
K	13
L	6.4
P	38.1
Q	42.1
T	3



sprocket ref. P75



parts ref. P306-332



wear strip ref. P355-359



chain guide ref. P343-354

Code	Width (mm)	Weight (Kg/m)	Backflex radius	Sideflex radius
SS881TAB-K325(CC13SC)	82.6	3.2	75	460
SS881TAB-K450(CC18SC)	114.3	3.9	75	460
SS881TAB-K600(CC24SC)	152.4	4.6	75	610
SS881TAB-K750(CC30SC)	190.5	5.7	75	610
SS881TAB-K1000(CC40SC)	254	7.5	75	610
SS881TAB-K1200(CC50SC)	304.8	8.9	75	610