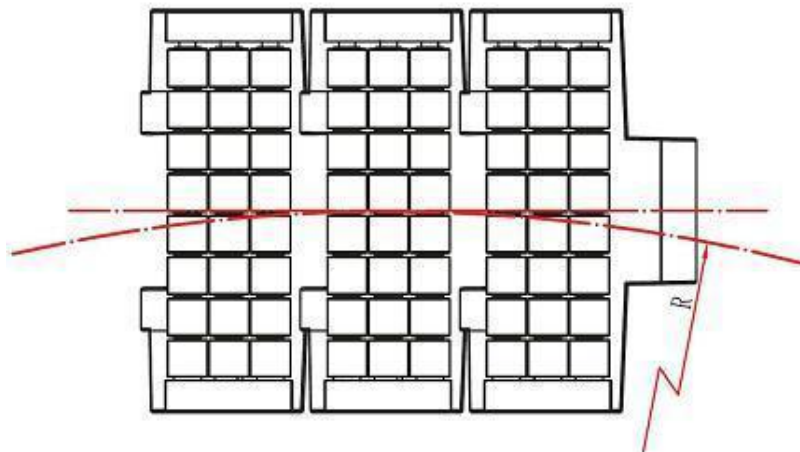
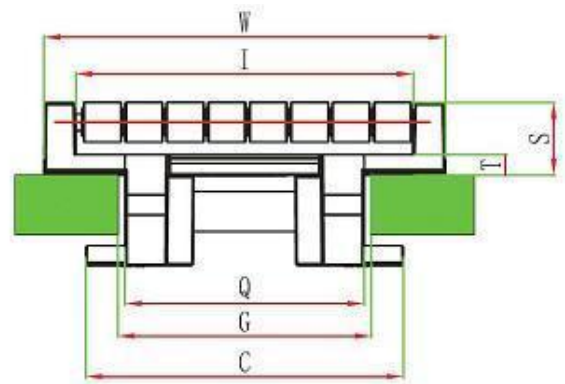
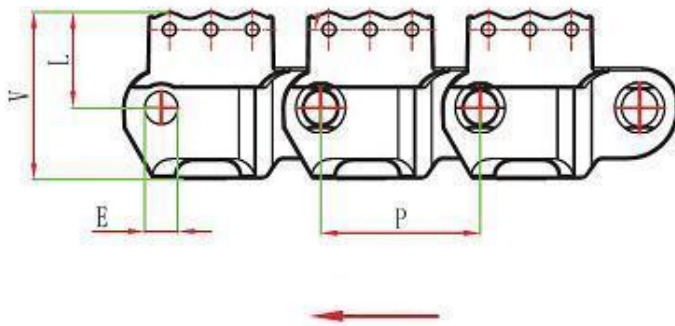


LBP882TAB Sideflex chains

- Main application is for side-flex conveying of various kinds of Aluminium foil and paper packed beverage.
- Plates material: POM, color: Dark Green,
- Roller Material.: POM, Work temperature: -30°C~90°C color: dark green;
- Pin material: stainless steel;
- Working load: 3200N, max. conveying length: 12m
- Sprockets are the same with chains 882TAB
- 26pcs per meter;



	mm
E	7.9
G	59
V	41.2
S	19.3
L	23.5
P	38.1
Q	57.2
T	4.8
C	76



sprocket P40-41



parts P306-332



wear strip P355-359



chain guide P343-354

Code	Width (mm)	Roller width (mm)	Weight (Kg/m)	Backflex radius(mm)	Sideflex radius (mm)
LBP882-TAB-K375	95.2	79	3.7	101	610