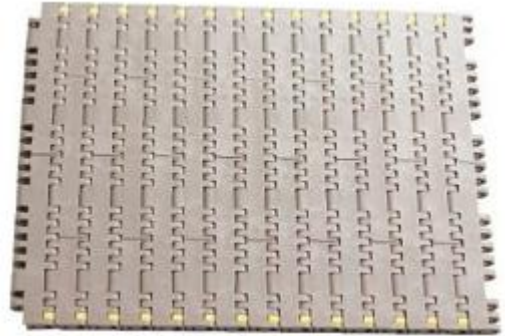


T-100PB Flat top modular belt

- Main application: all kinds of glass bottles and packaging line conveyor.
- Material: POM.
- Work temperature: $-30^{\circ}\text{C} \sim +90^{\circ}\text{C}$
- Pin material.: PP
- Load: POM 17280N/M
- Color: blue, coffee
- Weight: POM: 12.50kg/m²



sprocket P135



parts P306-332

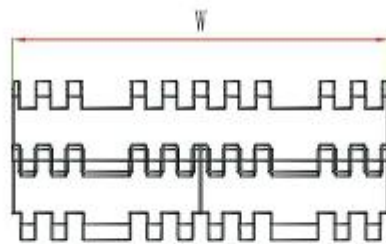


wear strip P355-359

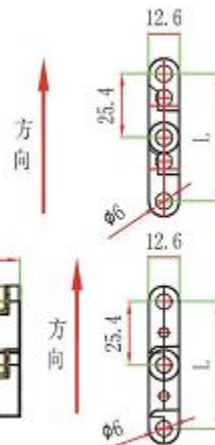
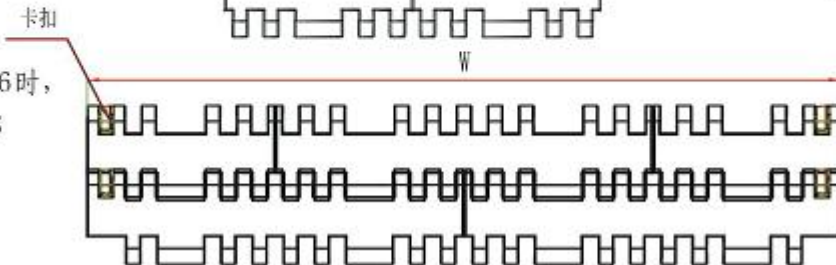


chain guide P343-354

- $W < 228.6$ 时,
网带拼图;



- $W \geq 228.6$ 时,
网带拼图;



Standard Width: $W=76.2*N$

W (mm)	152.4	304.8	457.2	609.6	762	914.4	1066.8	1219.2	76.2*N
--------	-------	-------	-------	-------	-----	-------	--------	--------	--------

Remarks: N, n is the multiples of integers, when design or purchase the belt, please contact the sales first to confirm the actual width.

T-100PG Flush grid modular belt

- Main application: all kinds of glass bottles and packaging line conveyor.
- Material: POM.
- Work temperature: -30°C ~ +90 °C
- Pin material.: PP
- Load: POM 17280N/M
- Color: blue, coffee
- Weight: POM: 11.9kg/m²
- Open area: 16.7%



sprocket P135



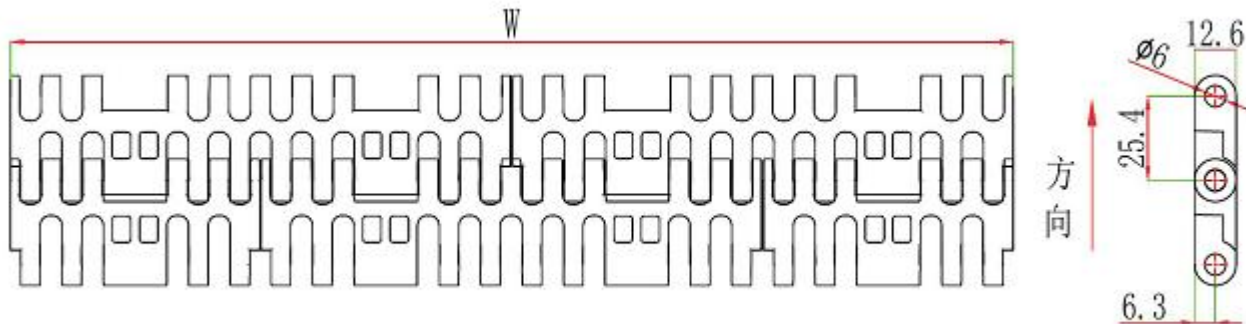
parts P306-332



wear strip P355-359



chain guide P343-354



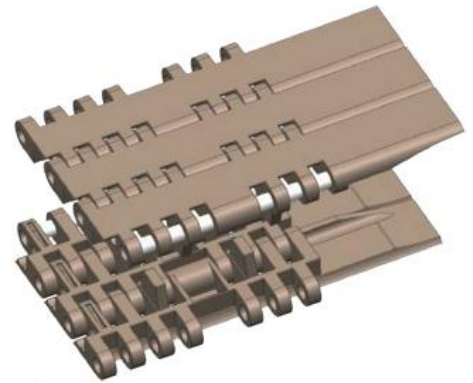
Standard Width: $W=76.2*N$

W (mm)	152.4	304.8	457.2	609.6	762	914.4	1066.8	1219.2	76.2*N
--------	-------	-------	-------	-------	-----	-------	--------	--------	--------

Remarks: N, n is the multiples of integers, when design or purchase the belt, please contact the sales first to confirm the actual width.

T-100DT Modular belt

- Single module Dynamic Transfer System for left- or right-hand self-clearing transfers to avoid dead plates at 90° transfers
- Material: POM. Work temperature: -30°C ~ +90 °C
- Pin material: PP
- Work Load: POM 2630N/M
- Weight: 1.7kg/m
- Color: coffee or blue



sprocket P135



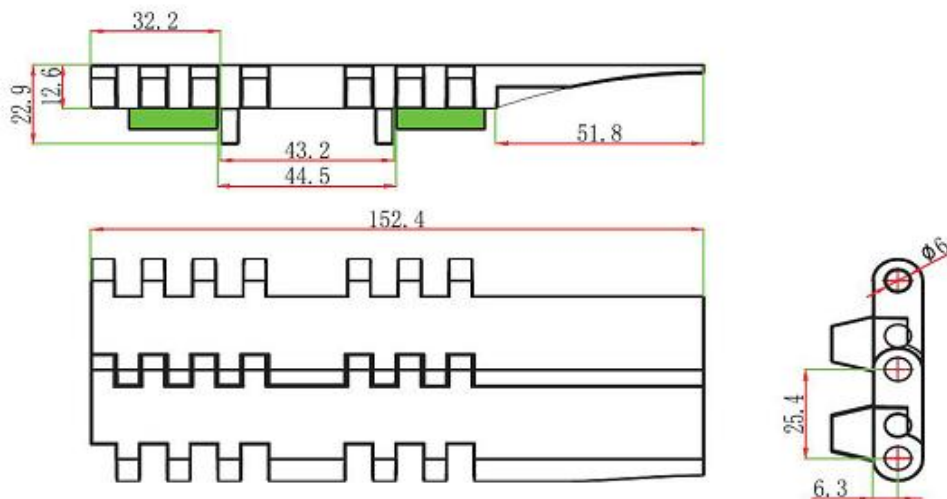
parts P306-332



wear strip P355-359



chain guide P343-354



Standard width: 152.4mm



T-100 perforated Modular belts with friction

- Main Application :mostly used for inclined conveyors
- Mat: POM. Work temp: -30°C ~ +90 °C
- Pin mat.: PP
- Load: POM 17280N/M
- Open area: 8%
- Color: white or coffee
- Weight:13.3kg/m2



sprocket P135



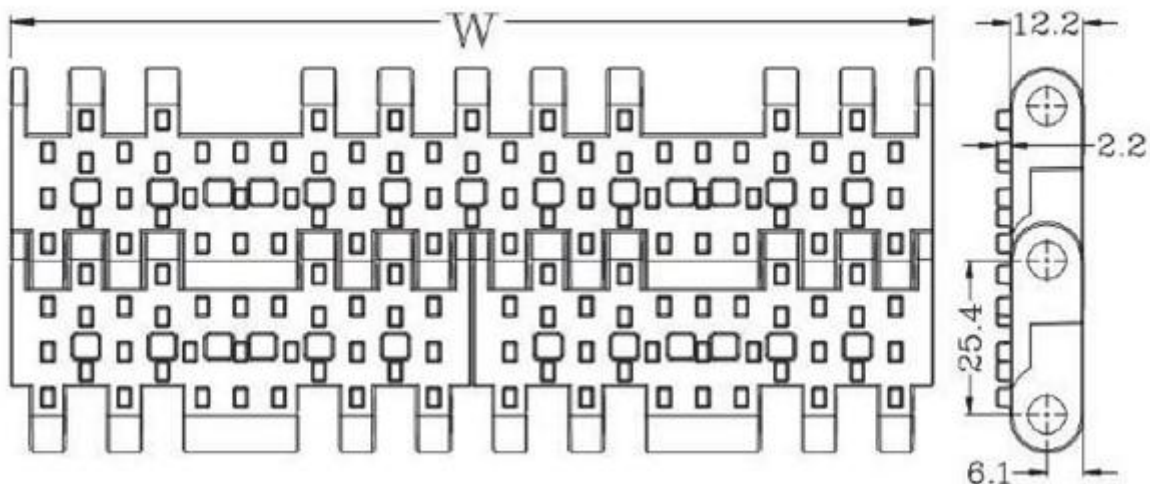
parts P306-332



wear strip P355-359



chain guide P343-354



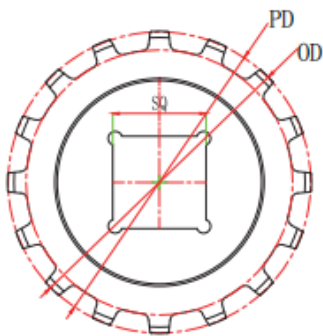
Standard Width: $W=76.2*N$

W (mm)	152.4	304.8	457.2	609.6	762	914.4	1066.8	1219.2	76.2*N
--------	-------	-------	-------	-------	-----	-------	--------	--------	--------

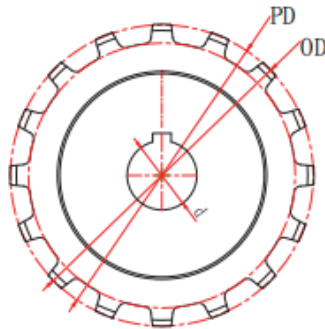
Remarks: N, n is the multiples of integers, when design or purchase the belt, please contact the sales first to confirm the actual width.

T-100 Sprocket

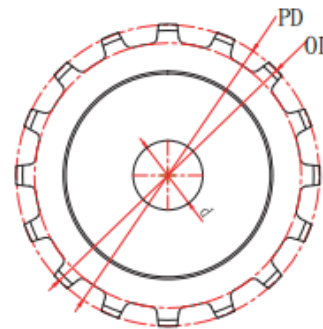
Raw material: nylon PA6



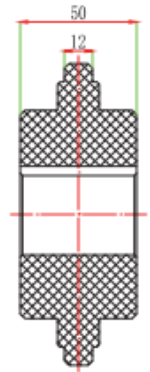
Square bore



Round bore with keyway



Round bore w/o keyway



Teeth	Pitch diameter(mm)	Outer diameter(mm)	Bore size (mm)	Sprocket model		
				Square bore	Round bore	
					with keyway	w/o keyway
14	114.1	114.5	25		1-1-100-14-25	2-T-100-14-25
			30		1-T-100-14-30	2-T-100-14-30
			35		1-T-100-14-35	2-T-100-14-35
			40	1-T-100-14-40X40	1-T-100-14-40	2-T-100-14-40
16	130.2	130.6	25		1-T-100-16-25	2-T-100-16-25
			30		1-T-100-16-30	2-T-100-16-30
			35		1-T-100-16-35	2-T-100-16-35
			40	1-T-100-16-40X40	1-T-100-16-40	2-T-100-16-40
18	146.3	146.9	25		1-T-100-18-25	2-T-100-18-25
			30		1-T-100-18-30	2-T-100-18-30
			35		1-T-100-18-35	2-T-100-18-35
			40	1-T-100-18-40X40	1-T-100-18-40	2-T-100-18-40
21	170.4	170.7	25		1-T-100-21-25	2-T-100-21-25
			30		1-T-100-21-30	2-T-100-21-30
			35		1-T-100-21-35	2-T-100-21-35
			40	1-T-100-20-40X40	1-T-100-21-40	2-T-100-21-40