

T-1000TL Raised rib modular belt

- Main Application :All kinds of glass bottles and packaging machine
- Material: POM.
- Work temperature: -30°C ~ +90 °C
- Pin Material: PP
- Work Load: 17280N/M
- Color : Dark Green
- Weight: 6.81kg/sq



sprocket P147-149



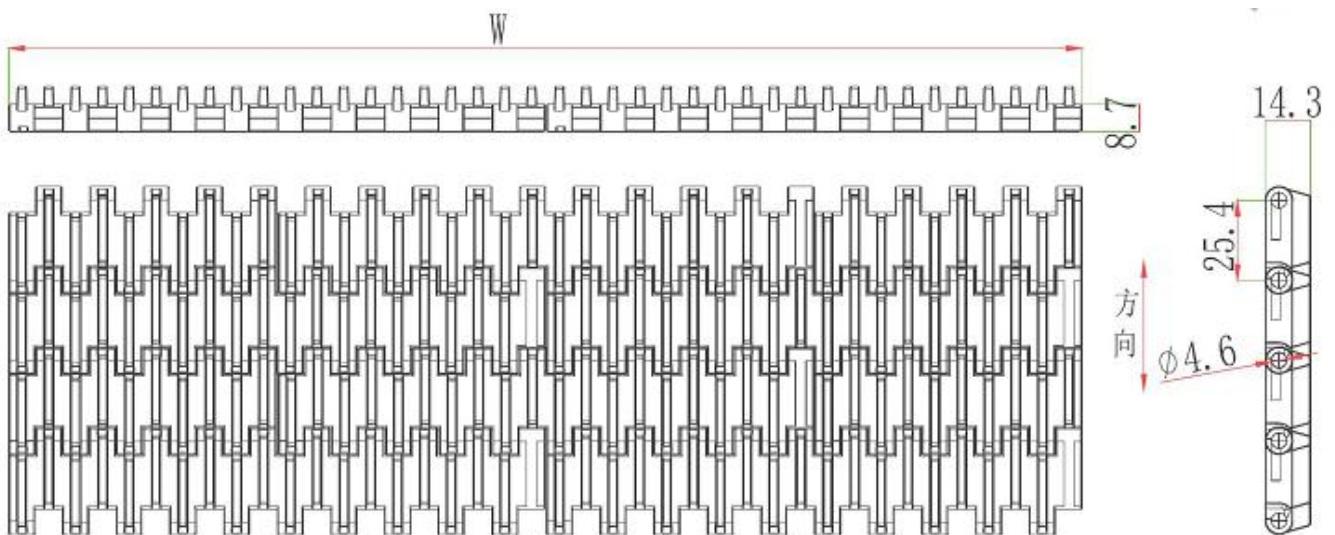
parts P306-332



wear strip P355-359



chain guide P343-354



Standard Width: $W=85*N$

| | | | | | | | | | | |
|--------|----|-----|-----|-----|-----|-----|-----|-----|-----|------|
| W (mm) | 85 | 170 | 255 | 340 | 425 | 510 | 595 | 680 | 765 | 85*N |
|--------|----|-----|-----|-----|-----|-----|-----|-----|-----|------|

Remarks: N, n is the multiples of integers, when design or purchase the belt, please contact the sales first to confirm the actual width.