

T-1300PB flat top modular belt

- Application: glass or plastic bottles conveyor machine;
- Material: POM. Work temperature: -30°C ~ +90 °C
- Pin material: PP, stainless steel
- Work load: POM,17000N/M
- Color: coffee
- Weight: 10.55kg/sq



sprocket P217



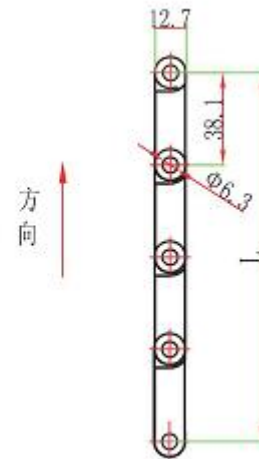
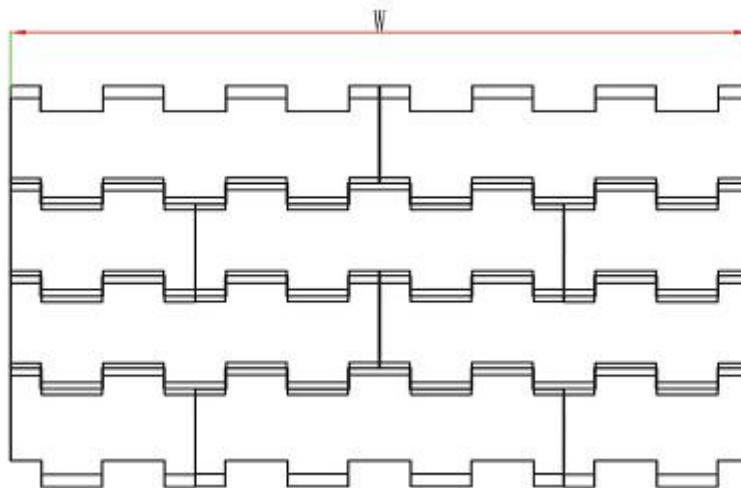
parts P306-332



wear strip P355-359



chain guide P343-354



Standard Width: $W=152.4*N$

W (mm)	152.4	304.8	457.2	609.6	762	914.4	1066.8	1219.2	152.4*N
--------	-------	-------	-------	-------	-----	-------	--------	--------	---------

Remarks: N, n is the multiples of integers, when design or purchase the belt, please contact the sales first to confirm the actual width.

T-1300ZK Vacuum type modular belt

- Application: glass or plastic bottles conveyor machine;
- Material: POM. Work temperature: -30°C ~ +90 °C
- Pin material: PP, stainless steel
- Work load: POM,17000N/M
- Color: coffee
- Weight: 10.55kg/sq



sprocket P217



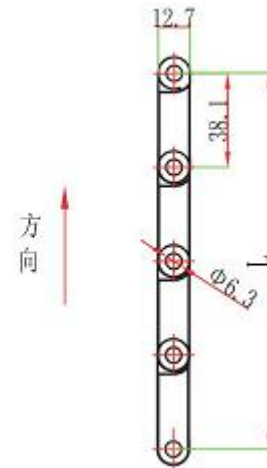
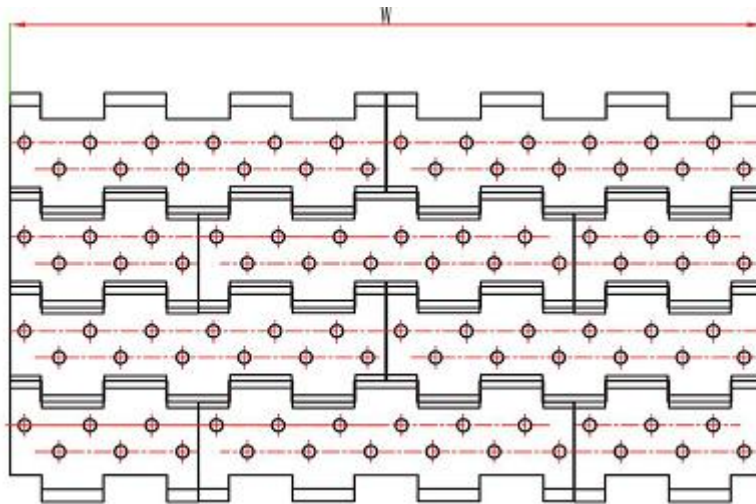
parts P306-332



wear strip P355-359



chain guide P343-354



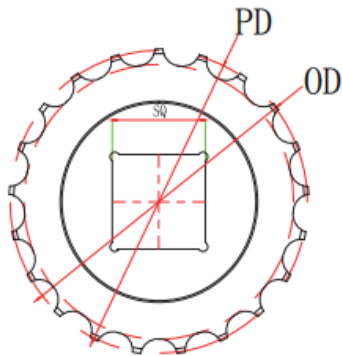
Standard Width: $W=152.4*N$

W (mm)	152.4	304.8	457.2	609.6	762	914.4	1066.8	1219.2	152.4*N
--------	-------	-------	-------	-------	-----	-------	--------	--------	---------

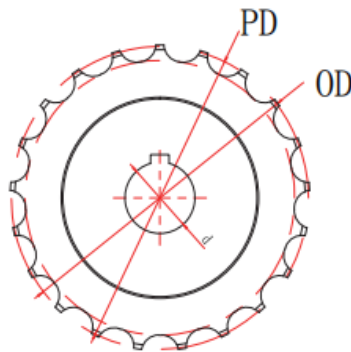
Remarks: N, n is the multiples of integers, when design or purchase the belt, please contact the sales first to confirm the actual width.

T-1300 Sprocket

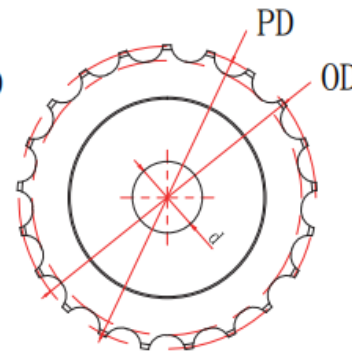
Raw material: nylon PA6



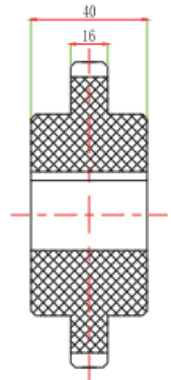
Square bore



Round bore
with keyway



Round bore
w/o keyway



Teeth	Pitch diameter (mm)	Outer diameter (mm)	Bore size (mm)	Sprocket model		
				Square bore	Round bore	
					with keyway	w/o keyway
17	103.7	104.7	20		1-T-1300-17-20	2-T-1300-17-20
			25		1-T-1300-17-25	2-T-1300-17-25
19	115.7	117	25		1-T-1300-19-25	2-T-1300-19-25
			30		1-T-1300-19-30	2-T-1300-19-30
			35	1-T-1300-19-40X40	1-T-1300-19-35	2-T-1300-19-35
21	127.8	129	25		1-T-1300-21-25	2-T-1300-21-25
			30		1-T-1300-21-30	2-T-1300-21-30
			40	1-T-1300-21-40X40	1-T-1300-21-40	2-T-1300-21-40
23	139.9	140.7	25		1-T-1300-23-25	2-T-1300-23-25
			30		1-T-1300-23-30	2-T-1300-23-30
			35		1-T-1300-23-35	2-T-1300-23-35
			40	1-T-1300-23-40X40	1-T-1300-23-40	2-T-1300-23-40
25	152.0	153	25		1-T-1300-25-25	2-T-1300-25-25
			30		1-T-1300-25-30	2-T-1300-25-30
			35		1-T-1300-25-35	2-T-1300-25-35
			40	1-T-1300-25-40X40	1-T-1300-25-40	2-T-1300-25-40

Remarks: if the bore size below 40mm, the outer diameter above 120mm, it can be processed as split sprocket.