

T-2000PB Flat top modular belt

- Application: cans, cartoon, bottles packaging conveyor;
- Material: POM. Work temperature: $-30^{\circ}\text{C} \sim +90^{\circ}\text{C}$
- Pin material: PP
- Work Load: POM 17280N/M; PP 8080N/M
- Color: white
- Weight: POM 8.6kg/sq;



sprocket P196



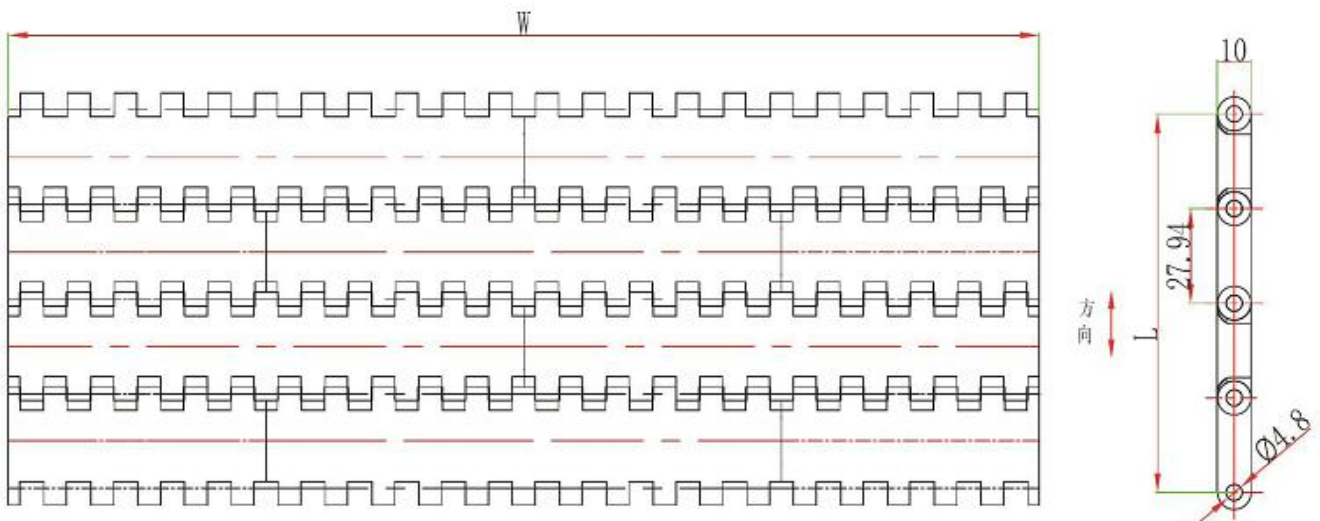
parts P306-332



wear strip P355-359



chain guide P343-354



Standard Width: $W=76.2*N$

**Non-standard Width: $W=76.2*N+13.85*n$,
the requirements length of belts : $L=2*P*N$, note: P is pitch.**

mm	76.2	152.4	228.6	304.8	381	457.2	533.4	609.6	685.8	762	$76.2*N$
----	------	-------	-------	-------	-----	-------	-------	-------	-------	-----	----------

Remarks: N, n is the multiples of integers, when design or purchase the belt, please contact the sales first to confirm the actual width.

T-2000PG Flush grid modular belt

- Application: cans, cartoon, bottles packaging conveyor;
- Material: POM. Work temperature: -30°C ~ +90°C
- Pin material: PP
- Work Load: POM 17280N/M;
- Color: white
- Weight: 7.5kg/sq;
- Open area: 39.5%



sprocket P196



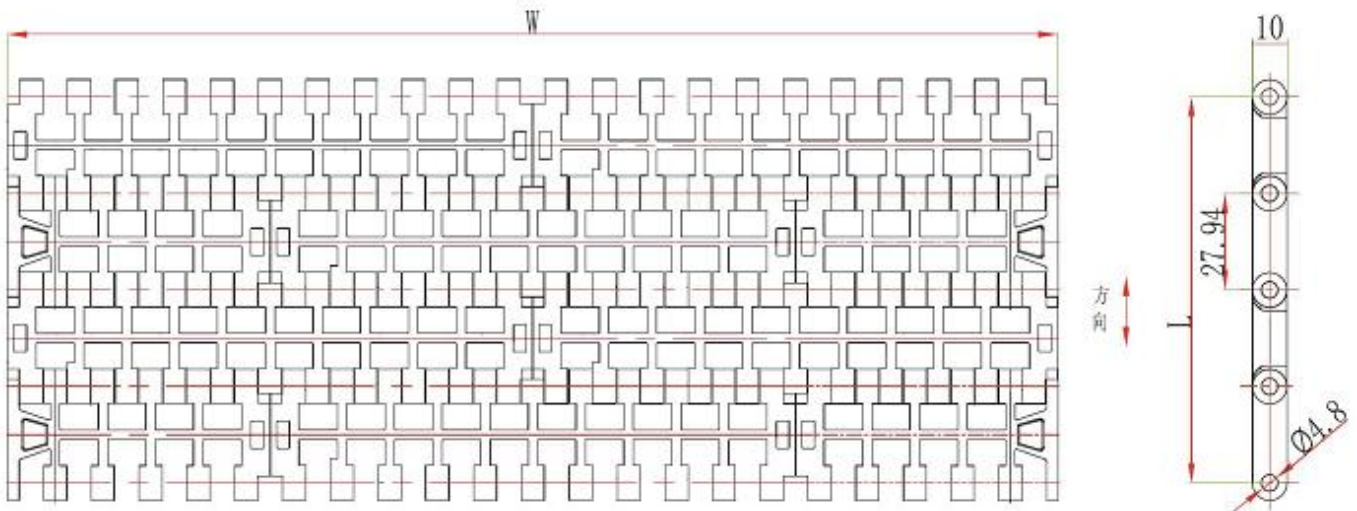
parts P306-332



wear strip P355-359



chain guide P343-354



Standard Width: $W=76.2*N$

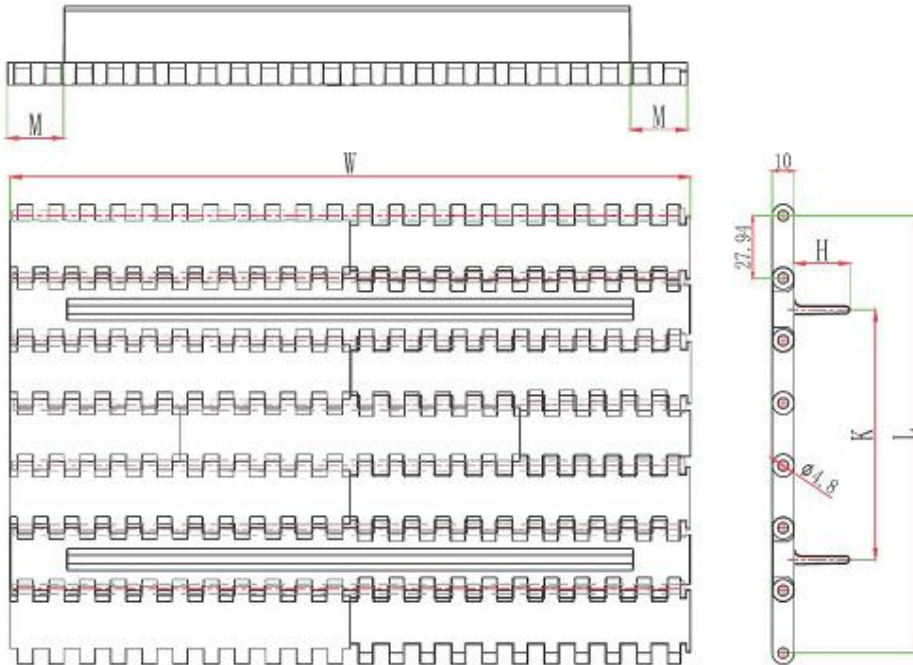
**Non-standard Width: $W=76.2*N+13.85*n$,
the requirements length of belts : $L=2*P*N$, note: P is pitch.**

mm	76.2	152.4	228.6	304.8	381	457.2	533.4	609.6	685.8	762	$76.2*N$
----	------	-------	-------	-------	-----	-------	-------	-------	-------	-----	----------

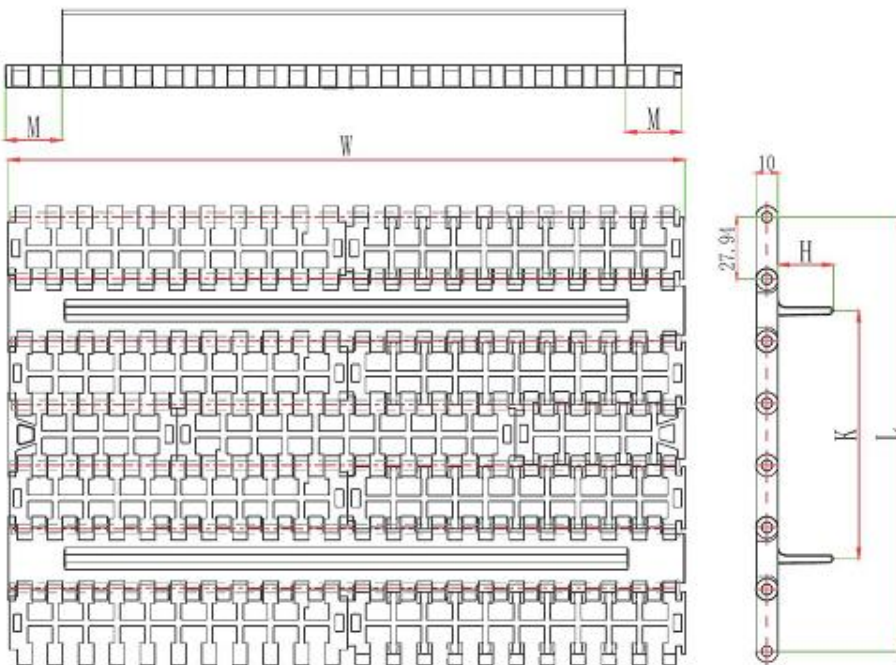
Remarks: N, n is the multiples of integers, when design or purchase the belt, please contact the sales first to confirm the actual width.

T-2000 Flat top modular belt with flight

- Application: suitable for the mid pitch cans, cartons, bottles elevating conveying; Flight distance $K=27.94*2*N$
- Belt side and flight distance $M= 25.4, 30, 35, 40, 45, 50$;
- Flight height $H=10, 20, 25, 30, 40, 50$;



T-2000 Flush grid modular belt with flight

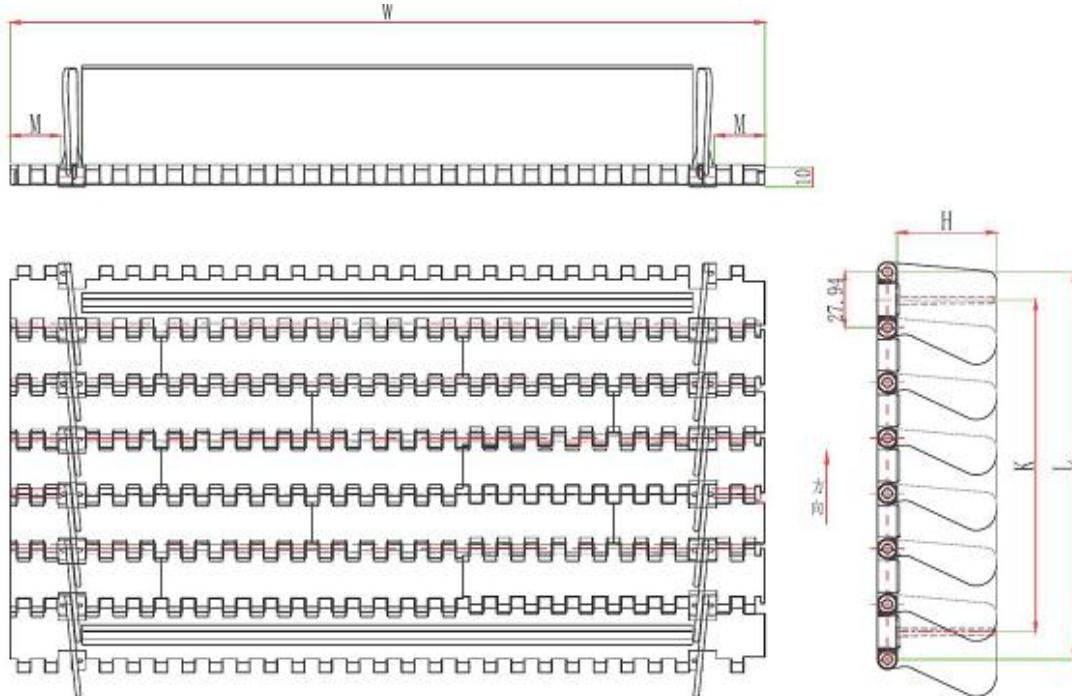


Standard Width: $W=152.4+76.2*N$; Non-standard Width: $W=152.4+76.2*N+13.85*n$, the requirements length of belts : $L=2*P*N$, note: P is pitch.

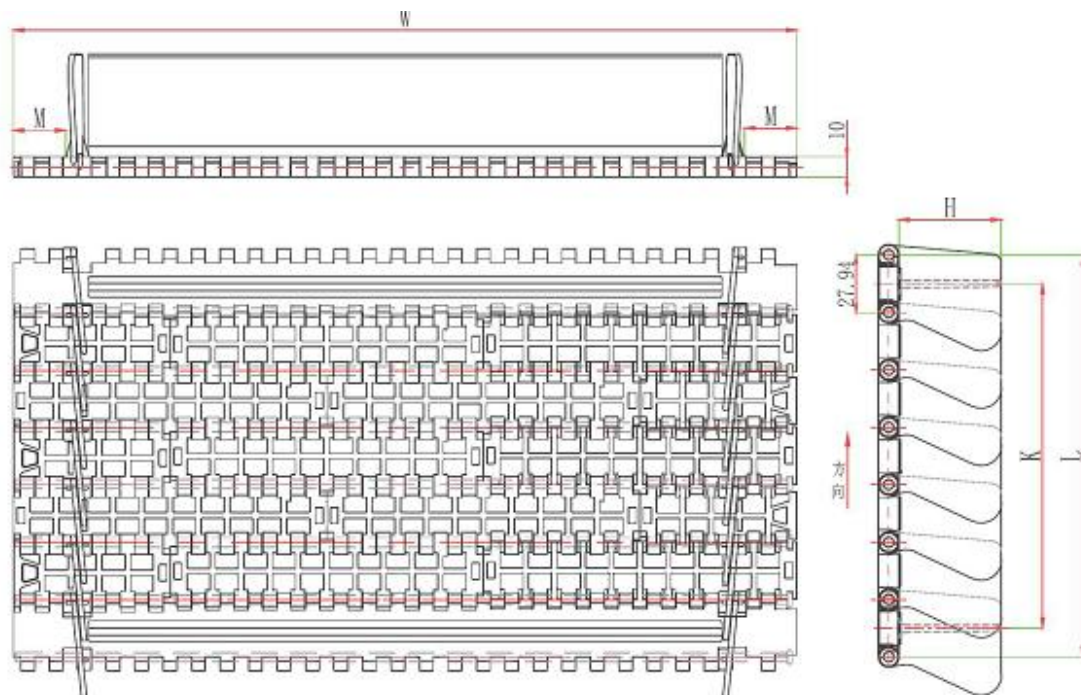
mm	152.4	228.6	304.8	381	457.2	533.4	609.6	685.8	762	$152.4+76.2*N$
----	-------	-------	-------	-----	-------	-------	-------	-------	-----	----------------

T-2000 Flat top modular belt with Flight+Sidewall

- Suitable for all kinds of products conveying; Flight/sidewall height: 50mm
- Flight distance $K=27.94*2*N$
- Belt side and sidewall distance $M= 24.1, 31.1, 38, 49.9$;
- Flight height $H=10, 20, 25, 30, 40, 50$;



T-2000 Flush Grid modular belt with Flight+Sidewall

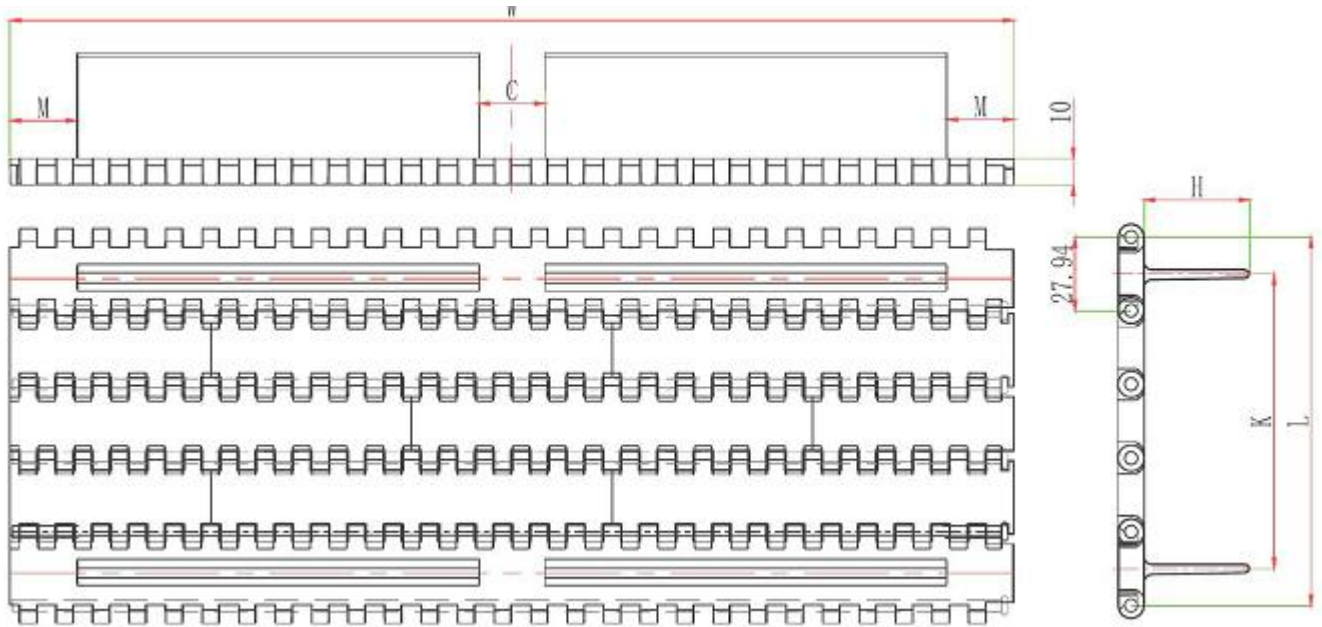


Standard Width: $W=152.4+76.2*N$; Non-standard Width: $W=152.4+76.2*N+13.85*n$, the requirements length of belts : $L=2*P*N$,note:P is pitch.

mm	152.4	228.6	304.8	381	457.2	533.4	609.6	685.8	762	$152.4+76.2*N$
----	-------	-------	-------	-----	-------	-------	-------	-------	-----	----------------

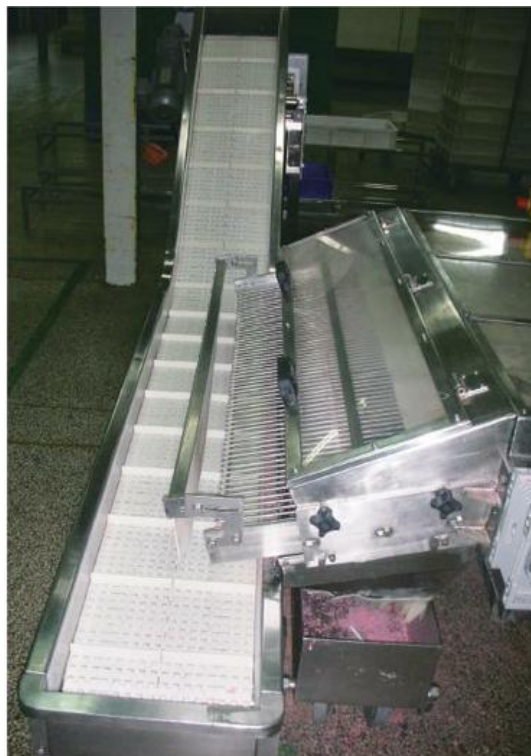
T-2000 Flat top modular belt with Flight+gap

- Suitable for all kinds of products sorting and conveying;
- Flight distance $K=27.94*2*N$
- Belt side and sidewall distance $M= 25.4, 30, 35, 40, 45, 50$;
- Flight height $H=10, 20, 25, 30, 40, 50$;



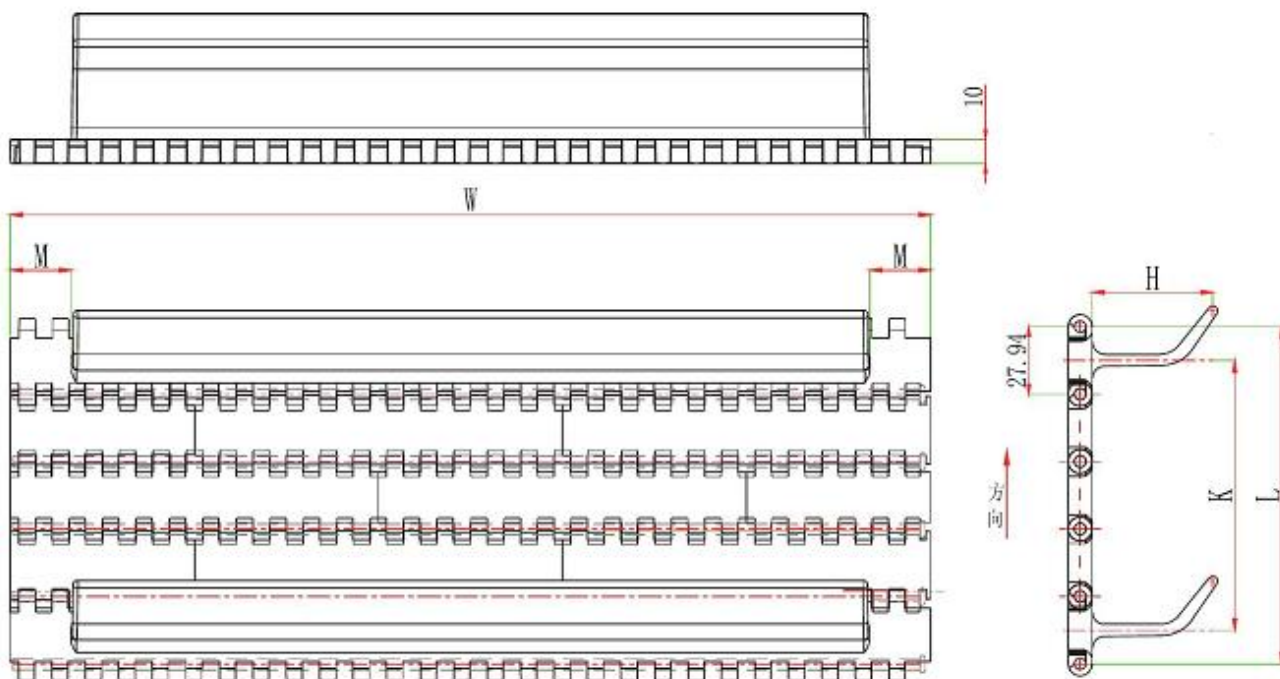
**Standard Width: $W=152.4+76.2*N$; Non-standard Width: $W=152.4+76.2*N+13.85*n$,
the requirements length of belts : $L=2*P*N$, note: P is pitch.**

mm	152.4	228.6	304.8	381	457.2	533.4	609.6	685.8	762	$152.4+76.2*N$
----	-------	-------	-------	-----	-------	-------	-------	-------	-----	----------------



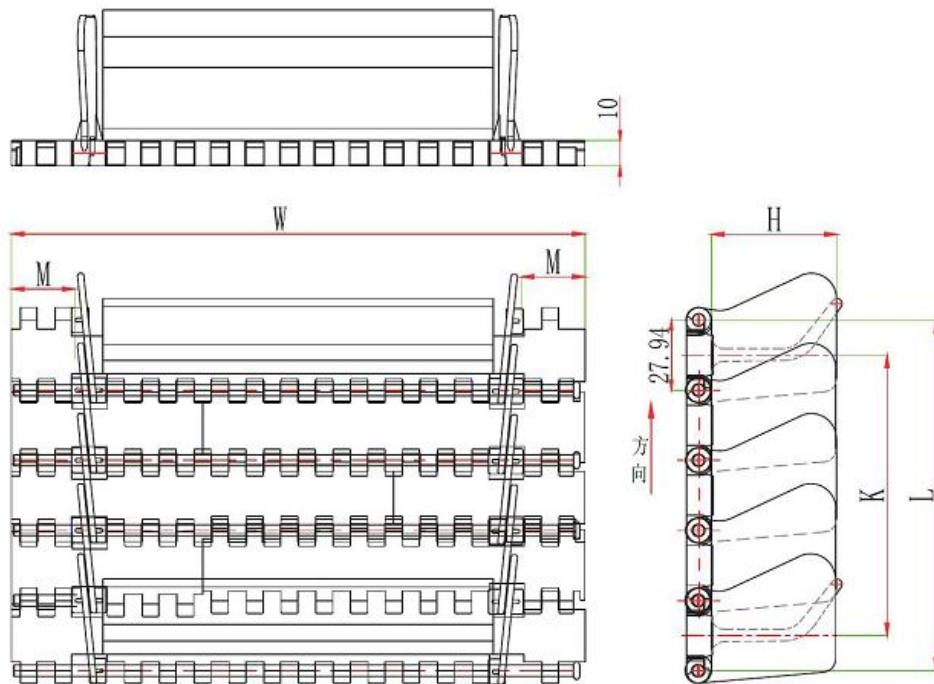
T-2000 flat top modular belt with curve flight

- Suitable for all kinds of products sorting and conveying;
- Flight distance $K=27.94*2*N$
- Belt side and sidewall distance $M= 25.4, 30, 35, 40, 45, 50$;
- Flight height: 50mm;
- Flight width: 228.6/381mm;



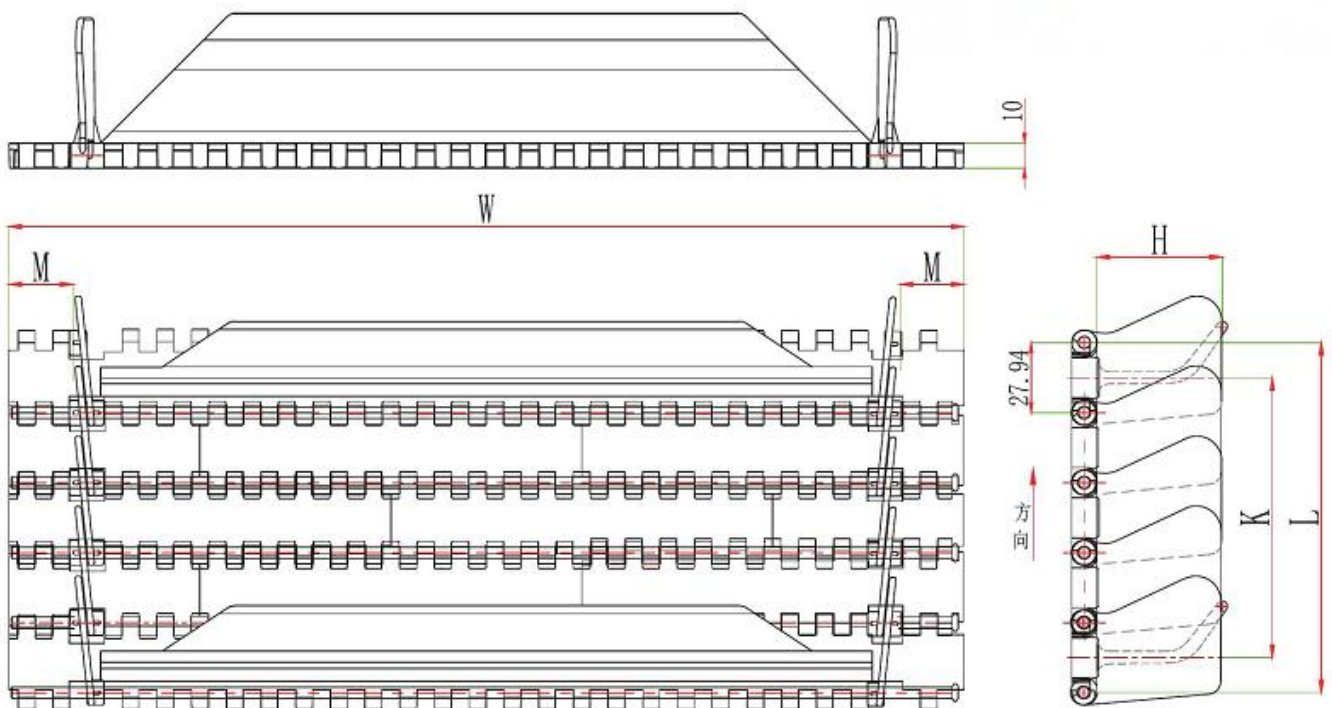
T-2000 flat top modular belt with curve flight+sidewall

- Suitable for all kinds of products sorting and conveying;
- Flight distance $K=27.94*2*N$; Belt side and sidewall distance $M= 25.4$;
- Flight/sidewall height: 50mm; Flight width: 228.6mm;



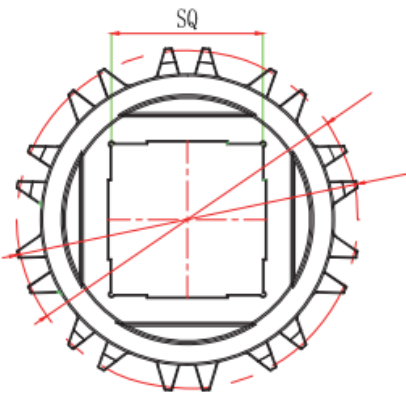
T-2000 flush grid modular belt with curve flight+sidewall

- Suitable for all kinds of products sorting and conveying;
- Flight distance $K=27.94*2*N$; Belt side and sidewall distance $M= 25.4$;
- Flight/sidewall height: 50mm; Flight width: 381mm;

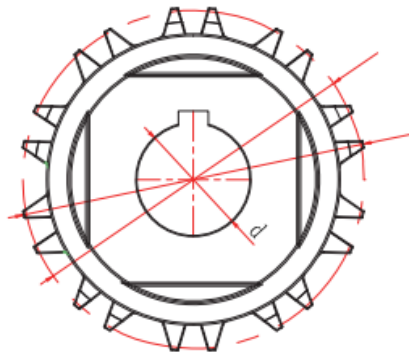


T-2000 Sprocket

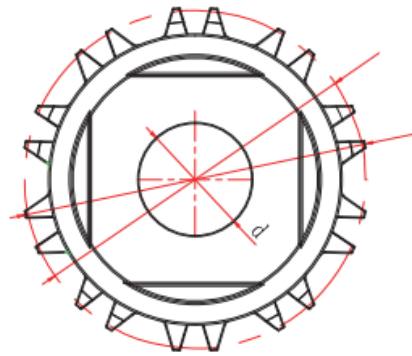
Raw material: Nylon PA6



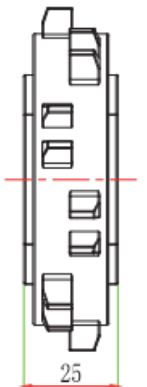
Square bore



Round bore with keyway



Round bore w/o keyway



Teeth	Pitch diameter r(mm)	Outer diameter r(mm)	Bore size (mm)	Sprocket model		
				Square bore	Round bore	
				Sprocket/idler	sprocket	Idler
10	90.42	92.1	30		3-T-2000-10-30	4-T-2000-10-30
				3-T-2000-10-40X40		
12	107.95	109.7	30		3-T-2000-12-30	4-T-2000-12-30
				3-T-2000-12-40X40		
18	160.9	162.6	30		3-T-2000-18-30	4-T-2000-18-30
			40	3-T-2000-18-40X40	3-T-2000-18-40	4-T-2000-18-40