

T-2100 Modular belt

- Application: pharmaceutical industry, packaging machines
- Material: POM.
- Work temperature: -30°C ~ +90 °C
- Pin mat.: PP
- Load: POM 10500N/M
- Color: coffee
- Open area: 25%



sprocket P89



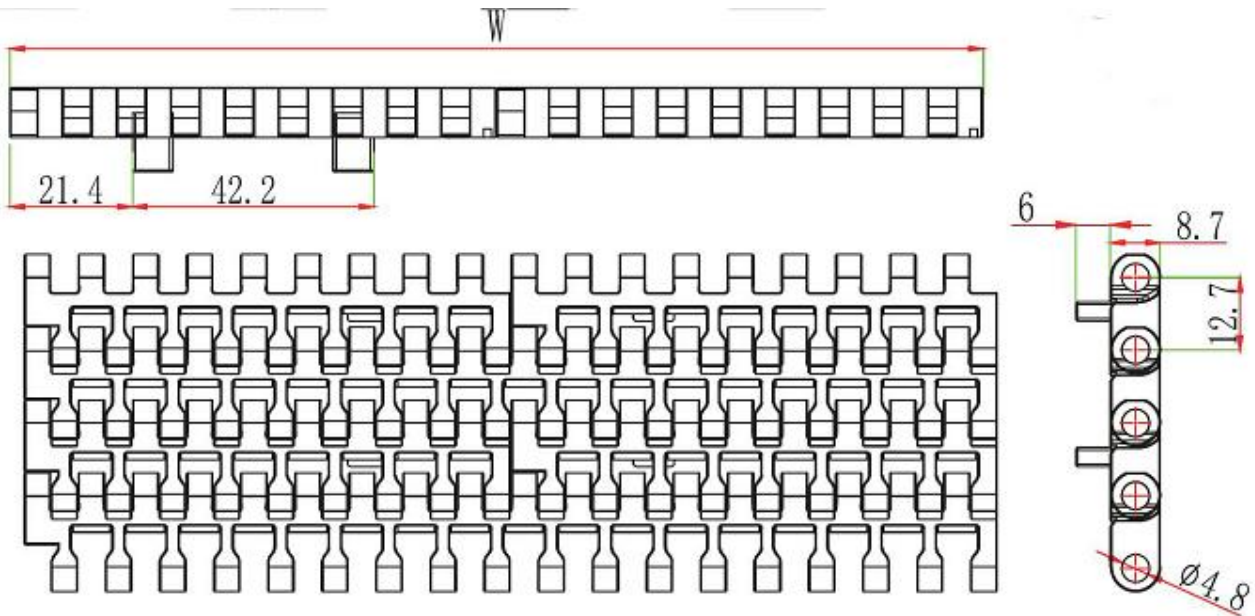
parts P306-332



wear strip P355-359



chain guide P343-354



Standard Width: $W=85*N$

Nonstandard Width: $85N+9.5n$

W (mm)	50	85	170	255	340	425	510	595	680	765	85*N

Remarks: N, n is the multiples of integers, when design or purchase the belt, please contact the sales first to confirm the actual width.

T-2100 Modular belt

- Application: pharmaceutical industry, packaging machines
- Material: POM.
- Work temperature: -30°C ~ +90 °C
- Pin mat.: PP
- Load: POM 525N/M
- Color: coffee
- Open area: 25%
- Weight: 0.39kg/m
- Width: 50mm (1.97 inch)



sprocket P89



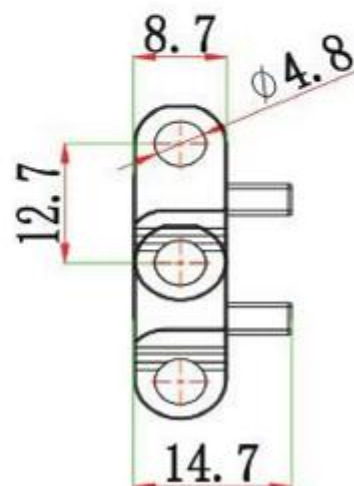
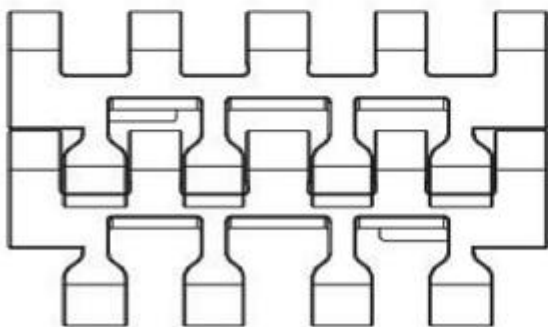
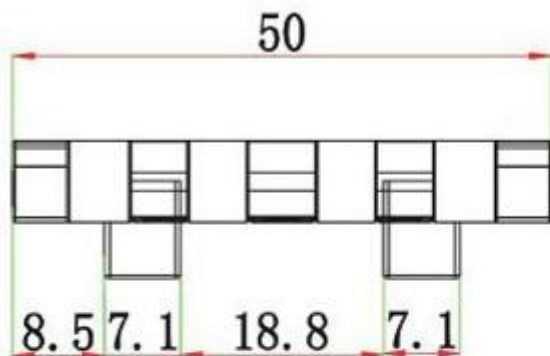
parts P306-332



wear strip P355-359

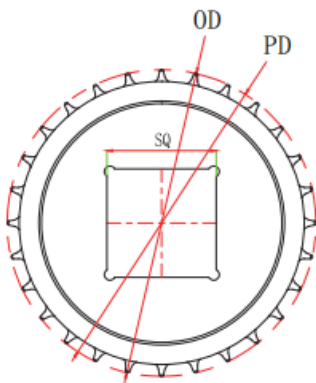


chain guide P343-354

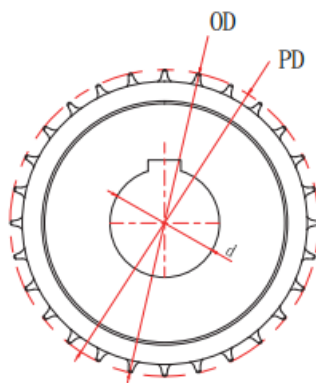


T-2100 Sprocket

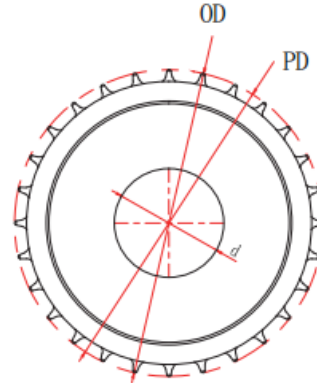
Raw material: PA6



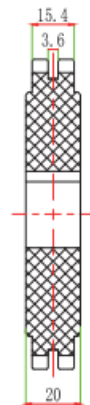
Square Bore



Round bore with keyway



Round Bore
w/o keyway



Teeth	Pitch diameter (mm)	Outer diameter (mm)	Bore size (mm)	Sprocket model		
				Square bore	Round bore	
					with keyway	w/o keyway
12	49.46	49.8	20		1-T-2100B-12-20	2-T-2100B-12-20
			25		1-T-2100B-12-25	2-T-2100B-12-25
15	61.56	61.8	20		1-T-2100B-15-20	2-T-2100B-15-20
			25		1-T-2100B-15-25	2-T-2100B-15-25
20	81.82	81.8	25		1-T-2100B-20-25	2-T-2100B-20-25
			30		1-T-2100B-20-30	2-T-2100B-20-30
			35		1-T-2100B-20-35	2-T-2100B-20-35
24	98.06	97.8	25		1-T-2100B-24-25	2-T-2100B-24-25
			30		1-T-2100B-24-30	2-T-2100B-24-30
			40		1-T-2100B-24-40	2-T-2100B-24-40
28	114.32	114	25		1-T-2100B-28-25	2-T-2100B-28-25
			30		1-T-2100B-28-30	2-T-2100B-28-30
			40	1-T-2100B-28-40X40	1-T-2100B-28-40	2-T-2100B-28-40
32	130.59	130.3	25		1-T-2100B-32-25	2-T-2100B-32-25
			30		1-T-2100B-32-30	2-T-2100B-32-30
			40	1-T-2100B-32-40X40	1-T-2100B-32-40	2-T-2100B-32-40