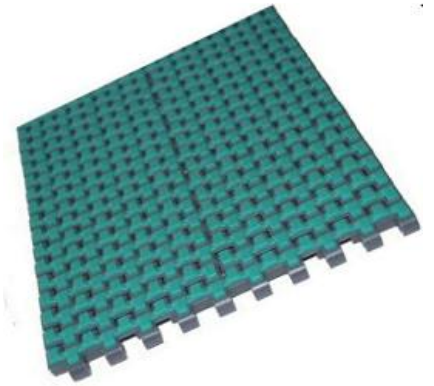


T-2200A Modular belt with rubber top

- For Food, Beverage & packaging conveyor
- Work temp: $-30^{\circ}\text{C} \sim +90^{\circ}\text{C}$ Pin mat.: PBT
- Mat: POM with silicone oil . Top Green Rubber
- Features: bottom of the belt with lubricating oil , low voice.
- High elasticity natural rubber; Hardness of Surface: 65
- Work Load: 16000N/M
- Open Area: 2%
- Weight: 9.53kg/m²



sprocket P97-98



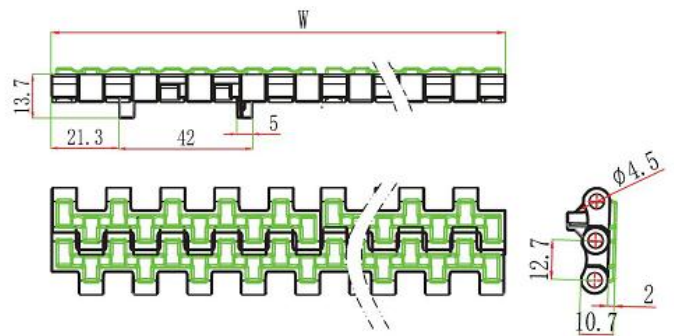
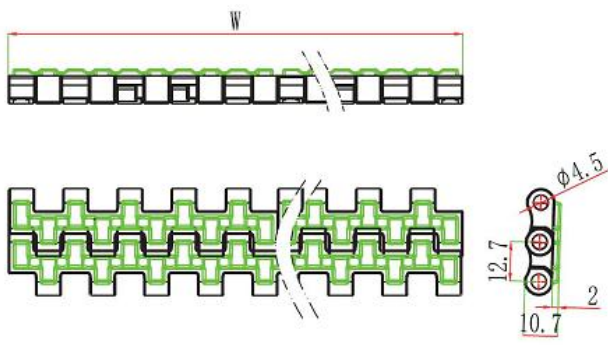
parts P306-332



wear strip P355-359



chain guide P343-354



Standard Width: $W=85*N$

W (mm)	85	170	255	340	425	510	595	680	765	85*N

Remarks: N, n is the multiples of integers, when design or purchase the belt, please contact the sales first to confirm the actual width.

T-2200PB Flat top Modular Belt

- For Food, Beverage & packaging machine conveyor
- Load: POM 16000N/M
- Color: blue/dark green
- Weight: 8.6kg/sq
- Belt Material: POM.
- Pin material: PBT
- Work temperature: -30°C ~ +90 °C



sprocket P97-98



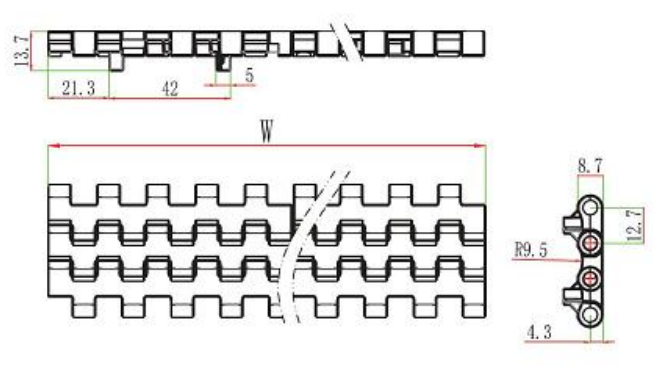
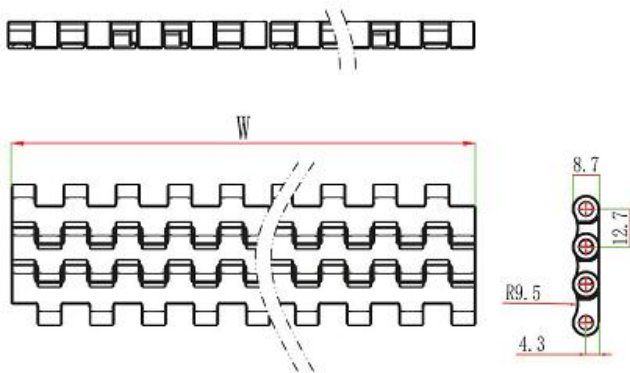
parts P306-332



wear strip P355-359



chain guide P343-354



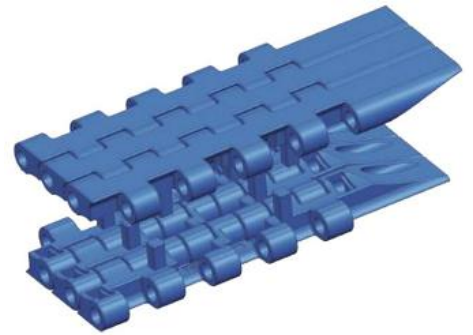
Standard Width: $W=85*N$

W (mm)	85	170	255	340	425	510	595	680	765	85*N
--------	----	-----	-----	-----	-----	-----	-----	-----	-----	------

Remarks: N, n is the multiples of integers, when design or purchase the belt, please contact the sales first to confirm the actual width.

T-2200DT Modular belt

- Single module Dynamic Transfer System for left- or right-hand self-clearing transfers to avoid dead plates at 90° transfers
- Material: POM. Work temperature: -30°C ~ +90 °C
- Pin material: PP
- Work Load: POM 16000N/M
- Color:blue



sprocket P97-98



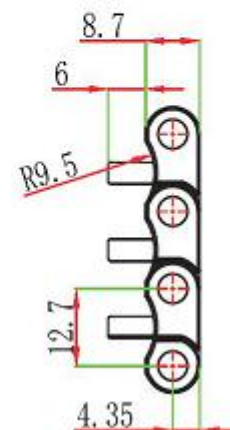
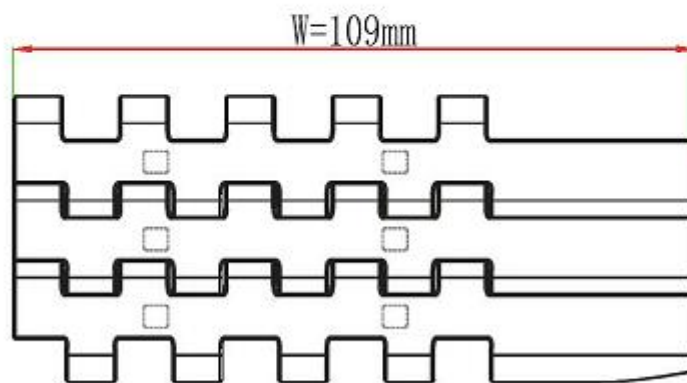
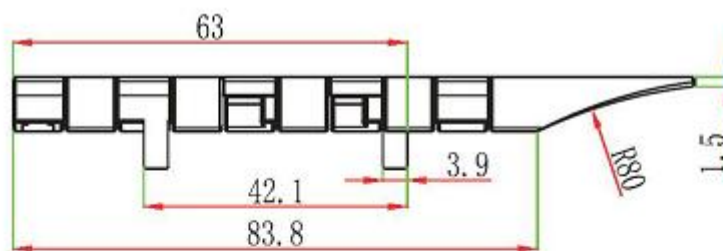
parts P306-332



wear strip P355-359



chain guide P343-354



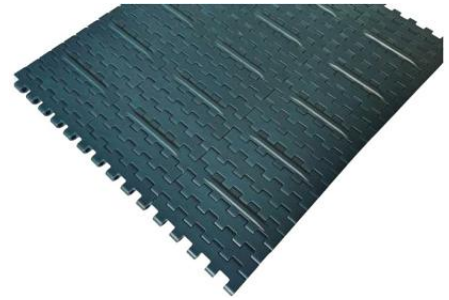
Standard Width: $W=109+85*N$

W (mm)	109	194	279	364	449	534	619	704	789	$109+85*N$
--------	-----	-----	-----	-----	-----	-----	-----	-----	-----	------------

Remarks: N, n is the multiples of integers, when design or purchase the belt, please contact the sales first to confirm the actual width.

T-2200F Modular belt with flight

- Application: for all kinds of beverage, food industry, and packaging line conveyor machine.
- Work Load: POM 16000N/M
- Belt Color: Dark green
- Weight: 8.6kg/m²
- Material: POM; Pin material: PBT
- Work temperature: -30°C ~ +90 °C



sprocket P97-98



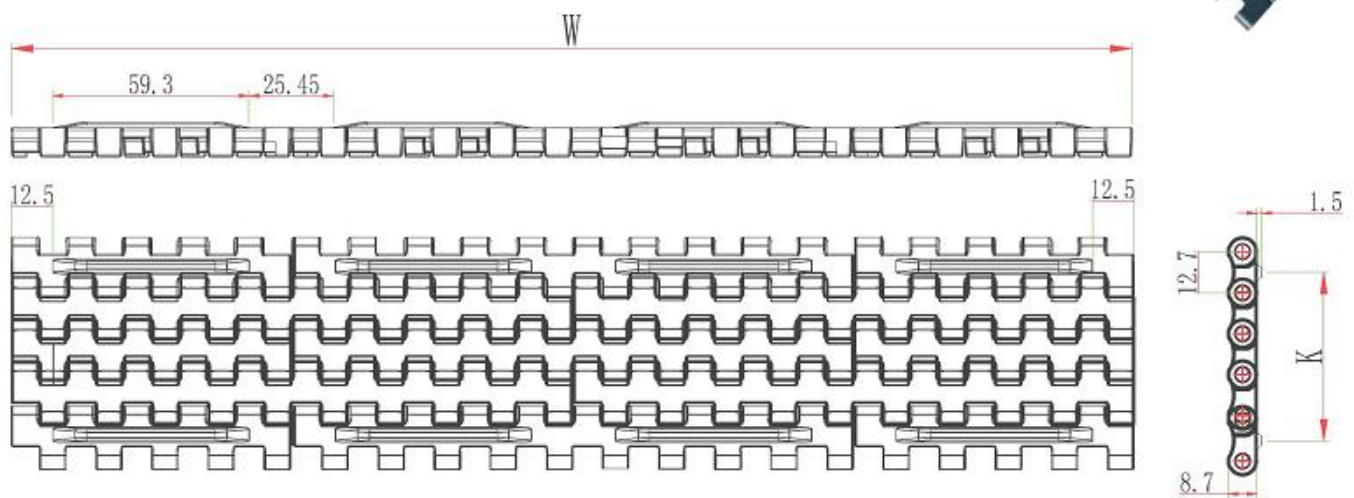
parts P306-332



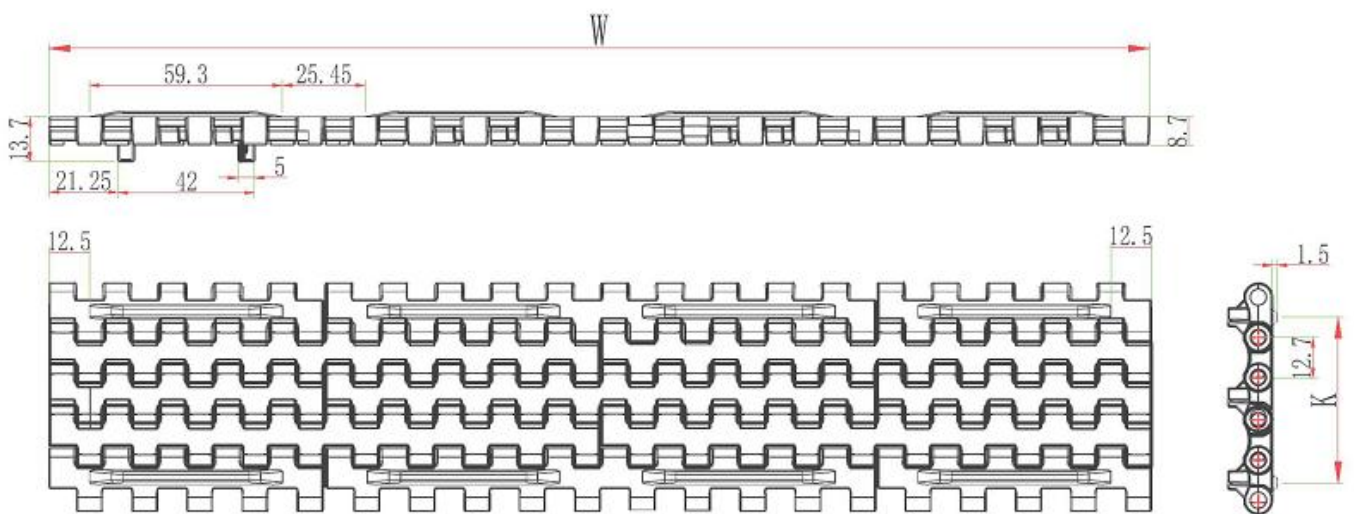
wear strip P355-359



chain guide P343-354



T-2200FYJ Modular belt with flight

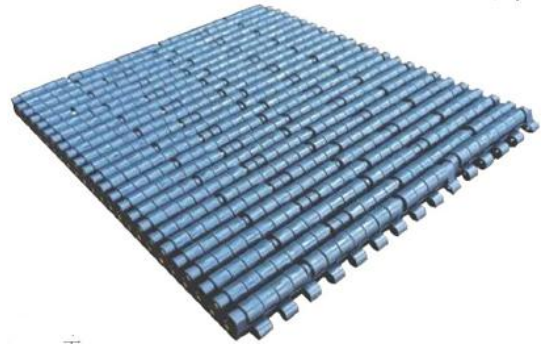


Standard Width: W=85*N

W (mm)	85	170	255	340	425	510	595	680	765	85*N
--------	----	-----	-----	-----	-----	-----	-----	-----	-----	------

T-2200G Modular belt with roller

- Application: for heat shrink packaging machine.
- Work Load: POM 16000N/M
- Belt Color: Dark green
- Weight: 23.5kg/m²
- Material: POM; Pin material: PBT,
- roller pin material: stainless steel
- Work temperature: -30°C ~ +90 °C



sprocket P97-98



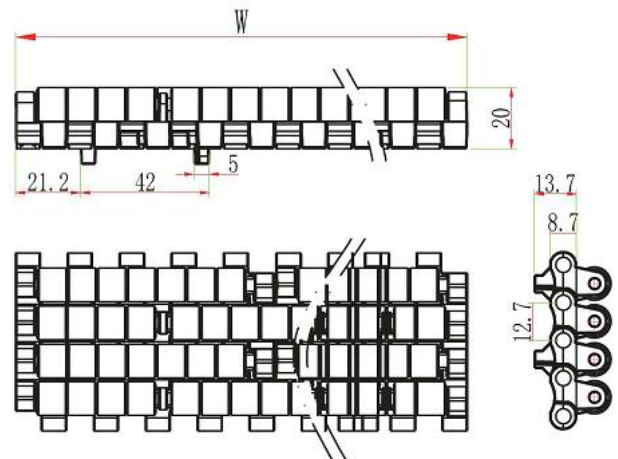
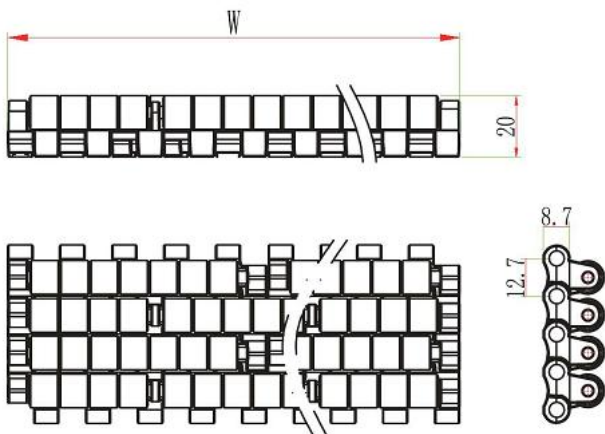
parts P306-332



wear strip P355-359



chain guide P343-354

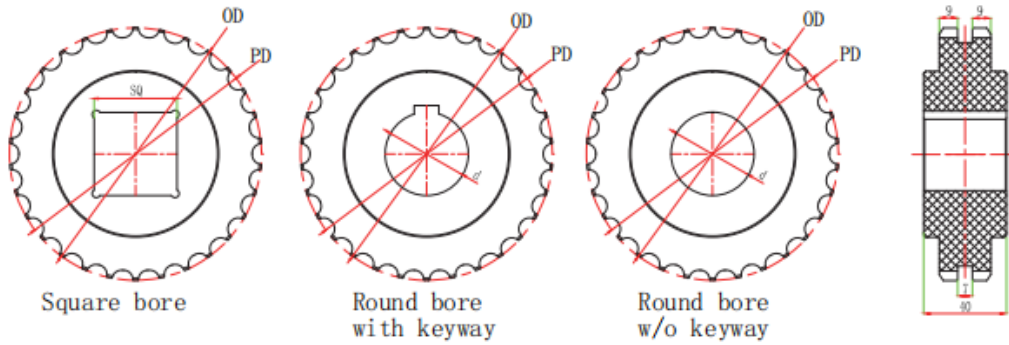


Standard Width: W=85*N

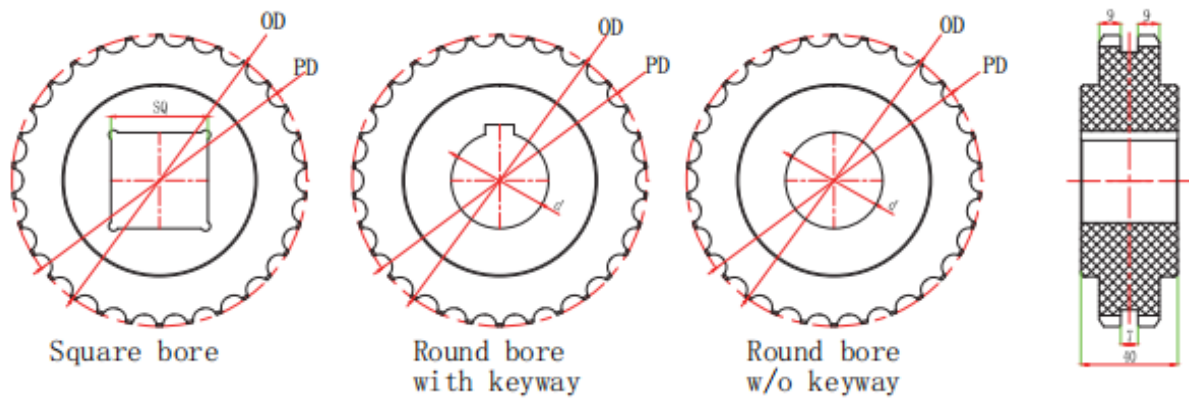
W (mm)	85	170	255	340	425	510	595	680	765	85*N
--------	----	-----	-----	-----	-----	-----	-----	-----	-----	------

T-2200 Sprocket

Raw material: PA6



Teeth	Pitch diameter (mm)	Outer diameter (mm)	Bore size (mm)	Sprocket model		
				Square bore	Round bore	
					with keyway	w/o keyway
16	65.1	65.3	20		1-T-2200-16-20	2-T-2200-16-20
			25		1-T-2200-16-25	2-T-2200-16-25
			30		1-T-2200-16-30	2-T-2200-16-30
			35		1-T-2200-16-35	2-T-2200-16-35
20	81.18	81.4	20		1-T-2200-20-20	2-T-2200-20-20
			25		1-T-2200-20-25	2-T-2200-20-25
			30		1-T-2200-20-30	2-T-2200-20-30
			35		1-T-2200-20-35	2-T-2200-20-35
24	97.3	97.5	25		1-T-2200-24-25	2-T-2200-24-25
			30		1-T-2200-24-30	2-T-2200-24-30
			35		1-T-2200-24-35	2-T-2200-24-35
			40		1-T-2200-24-40	2-T-2200-24-40
28	113.4	113.6	25		1-T-2200-28-25	2-T-2200-28-25
			30		1-T-2200-28-30	2-T-2200-28-30
			35		1-T-2200-28-35	2-T-2200-28-35
			40	1-T-2200-28-40X40	1-T-2200-28-40	2-T-2200-28-40
32	129.57	129.8	25		1-T-2200-32-25	2-T-2200-32-25
			30		1-T-2200-32-30	2-T-2200-32-30
			35		1-T-2200-32-35	2-T-2200-32-35
			40	1-T-2200-32-40X40	1-T-2200-32-40	2-T-2200-32-40
36	145.72	145.9	25		1-T-2200-36-25	2-T-2200-36-25
			30		1-T-2200-36-30	2-T-2200-36-30
			35		1-T-2200-36-35	2-T-2200-36-35
			40	1-T-2200-36-40X40	1-T-2200-36-40	2-T-2200-36-40



Teeth	Pitch diameter (mm)	Outer diameter (mm)	Bore size (mm)	Sprocket model		
				Square bore	Round bore	
				Sprocket/idler	sprocket	Idler
28	113.4	113.6	25		1-T-2200-28-25-HF	2-T-2200-28-25-HF
			30		1-T-2200-28-30-HF	2-T-2200-28-30-HF
			35		1-T-2200-28-35-HF	2-T-2200-28-35-HF
			40	1-T-2200-28-40X40-HF	1-T-2200-28-40-HF	2-T-2200-28-40-HF
32	129.57	129.8	25		1-T-2200-32-25-HF	2-T-2200-32-25-HF
			30		1-T-2200-32-30-HF	2-T-2200-32-30-HF
			35		1-T-2200-32-35-HF	2-T-2200-32-35-HF
			40	1-T-2200-32-40X40-HF	1-T-2200-32-40-HF	2-T-2200-32-40-HF
36	145.72	145.9	25		1-T-2200-36-25-HF	2-T-2200-36-25-HF
			30		1-T-2200-36-30-HF	2-T-2200-36-30-HF
			35		1-T-2200-36-35-HF	2-T-2200-36-35-HF
			40	1-T-2200-36-40X40-HF	1-T-2200-36-40-HF	2-T-2200-36-40-HF