

T-3500C Modular belt

- Main Application : Pharmaceutical Industry
- Material: POM,
- Working Temperature: $-30^{\circ}\text{C} \sim +90^{\circ}\text{C}$ 。
- Pin Mate: Nylon PA6
- Working load (25°C): 525N/M;
- Color: Blue
- Weight: 0.38 kg/m



sprocket P102



parts P306-332

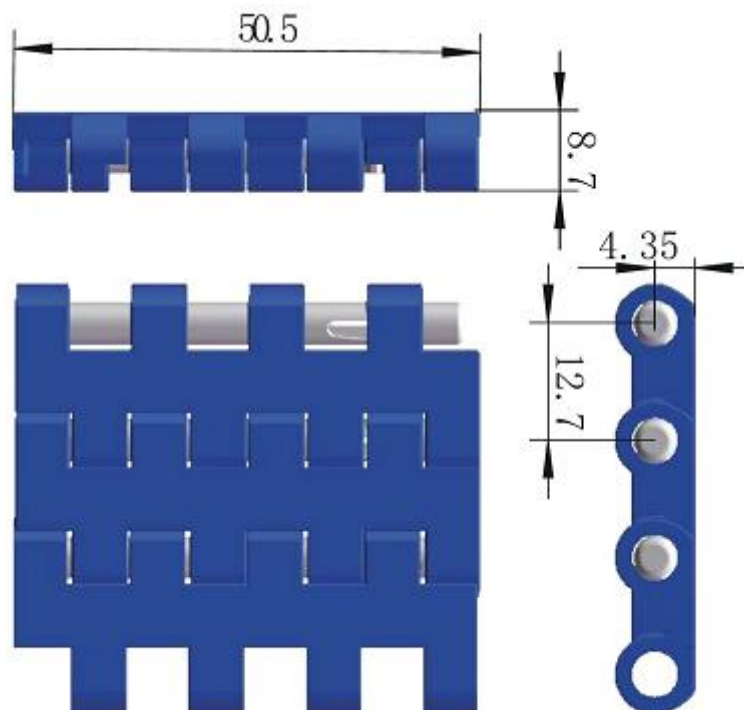


wear strip P355-359



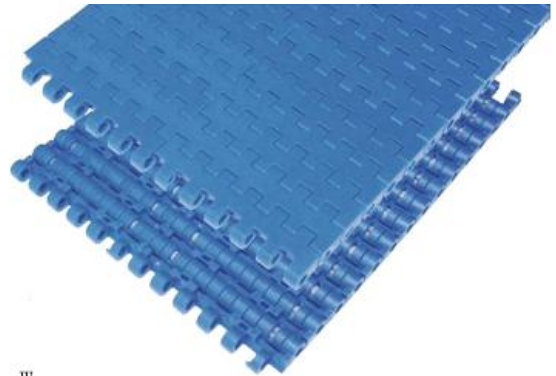
chain guide P343-354

Standard width: 50.5mm



T-3500 Modular belt

- Main Application : Pharmaceutical Industry
- Material: POM,
- Working Temperature: -30°C ~ +90°C。
- Pin Mate: Nylon PA6
- Working load (25°C): 10500N/M;
- Color: Blue
- Weight: 8.3 kg/sq



sprocket P102



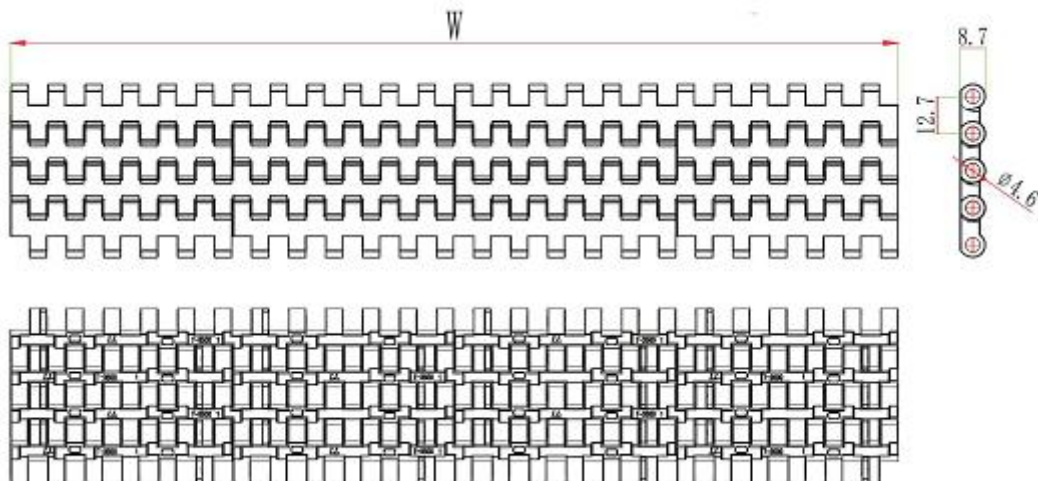
parts P306-332



wear strip P355-359



chain guide P343-354



Standard Width $W=76.2*N$

Non standard Width $W=76.2*N+12.7*n$

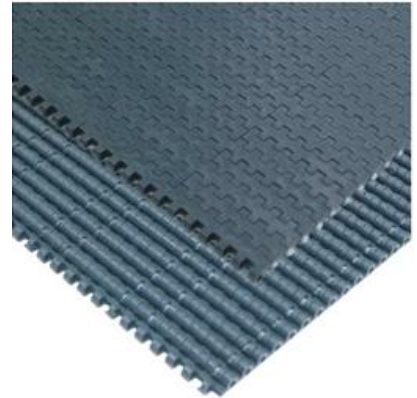
W (mm)	76.2	152.4	228.6	304.8	381	457.2	609.6	762	914.4	76.2*N
--------	------	-------	-------	-------	-----	-------	-------	-----	-------	--------

Remarks: N, n is the multiples of integers, when design or purchase the belt, please contact the sales first to confirm the actual width.

Remarks: N, n is the multiples of integers, when design or purchase the belt, please contact the sales first to confirm the actual width.

T-3500B Modular belt

- Main Application : Pharmaceutical Industry
- Material: POM,
- Working Temperature:-30°C~+90°C。
- Pin Mate: Nylon PA6
- Working load (25°C): 10500N/M;
- Color: Dark green
- The sprocket is same to T-3500 sprocket, the installation of sprocket is according to needs.
- Weight: 8.3 kg/sq



sprocket P102



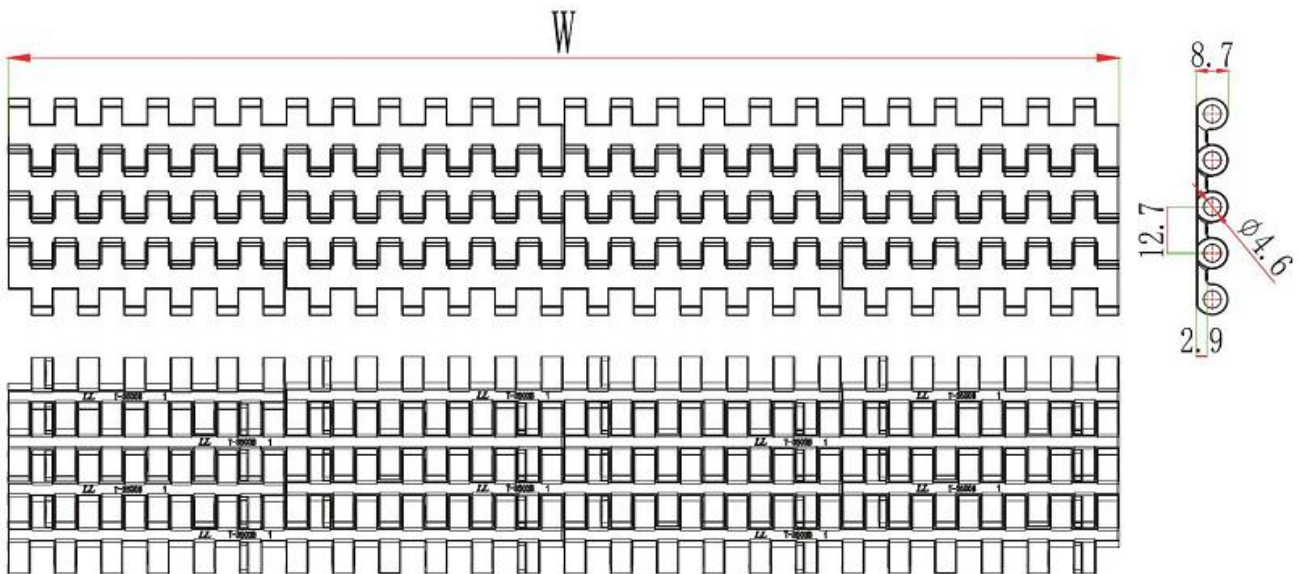
parts P306-332



wear strip P355-359



chain guide P343-354



Standard Width $W=76.2*N$

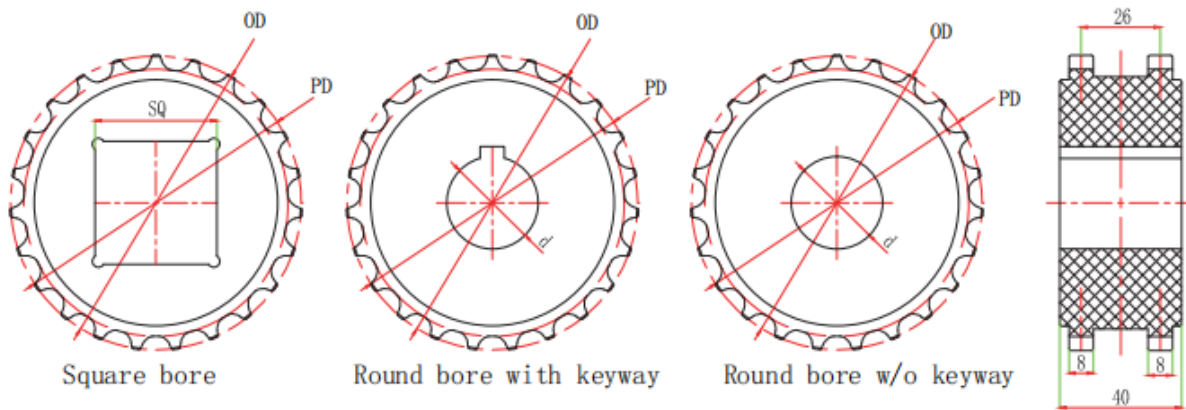
Non standard Width $W=76.2*N+12.7*n$

W (mm)	76.2	152.4	228.6	304.8	381	457.2	533.4	609.6	685.8	76.2*N
--------	------	-------	-------	-------	-----	-------	-------	-------	-------	--------

Remarks: N, n is the multiples of integers, when design or purchase the belt, please contact the sales first to confirm the actual width.

T-3500 Sprocket

Raw material: nylon PA6



Teeth	Pitch diameter (mm)	Outer diameter (mm)	Bore size (mm)	Sprocket model		
				Square bore	Round bore	
					with keyway	w/o keyway
10	41.75	42.7	15		1-T-3500B-10-15	2-T-3500B-10-15
			20		1-T-3500B-10-20	2-T-3500B-10-20
19	78.37	78.8	25		1-T-3500B-19-25	2-T-3500B-19-25
			30		1-T-3500B-19-30	2-T-3500B-19-30
			40		1-T-3500B-19-40	2-T-3500B-19-40
23	97.74	95.4	25		1-T-3500B-23-25	2-T-3500B-23-25
			30		1-T-3500B-23-30	2-T-3500B-23-30
			40	1-T-3500B-23-40X40	1-T-3500B-23-40	2-T-3500B-23-40
28	115.22	116	25		1-T-3500B-28-25	2-T-3500B-28-25
			30		1-T-3500B-28-30	2-T-3500B-28-30
			40	1-T-3500B-28-40X40	1-T-3500B-28-40	2-T-3500B-28-40
32	131.61	132.4	25		1-T-3500B-32-25	2-T-3500B-32-25
			30		1-T-3500B-32-30	2-T-3500B-32-30
			40	1-T-3500B-32-40X40	1-T-3500B-32-40	2-T-3500B-32-40