

T-3800 Modular belt

- Main application: large sterilization machines, and accumulative table for bottles;
- Material: PP. Work temperature: +1°C ~ +105°C, acid proof;
- Work Load: PP 23600N/M;
- Open area: 27%;
- Color: Grey;
- Weight:PP 11.2kg/m²;



sprocket P231



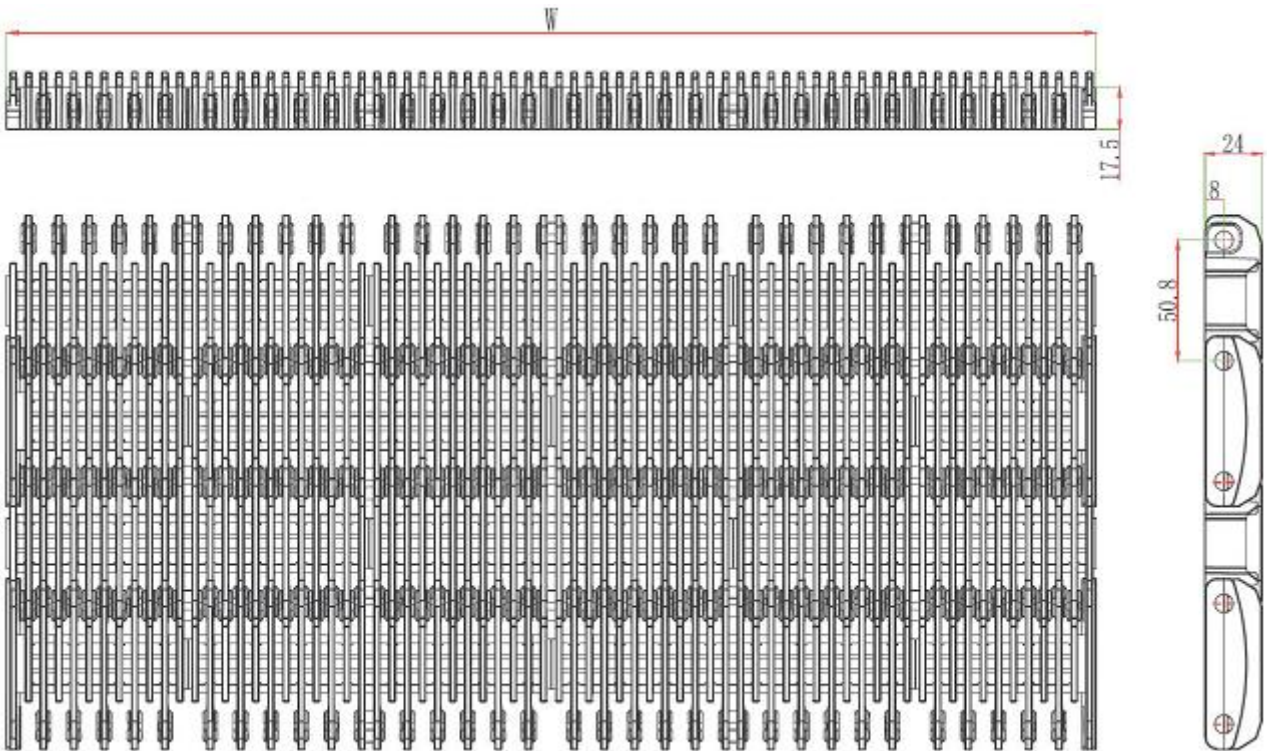
parts P306-332



wear strip P355-359



chain guide P343-354



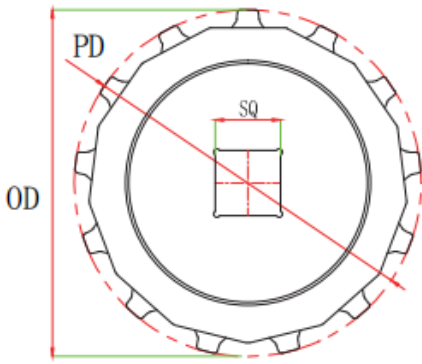
Standard Width: W=76.2*N

W mm	76.2	152.4	228.6	304.8	457.2	533.4	609.6	685.8	762	76.2*N
------	------	-------	-------	-------	-------	-------	-------	-------	-----	--------

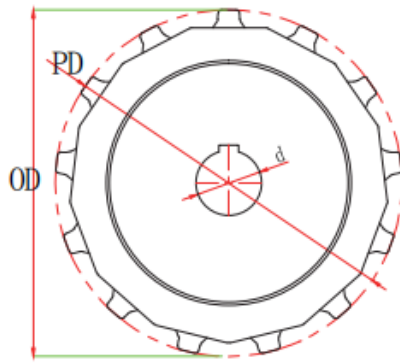
Remarks: N, n is the multiples of integers, when design or purchase the belt, please contact the sales first to confirm the actual width.

T-3800 Sprocket

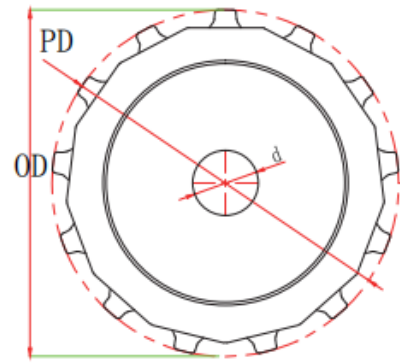
Raw material: nylon PA6



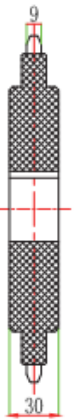
Square bore



Round bore with keyway



Round bore w/o keyway



Teeth	Pitch diameter (mm)	Outer diameter (mm)	Bore size (mm)	Sprocket model		
				Square bore	Round bore	
					with keyway	w/o keyway
13	212.3	212	40	1-T-3800-13-40X40	1-T-3800-13-40	2-T-3800-13-40
			45		1-T-3800-13-45	2-T-3800-13-45
			50		1-T-3800-13-50	2-T-3800-13-50
			60		1-T-3800-13-60	2-T-3800-13-60
			65		1-T-3800-13-65	2-T-3800-13-65
16	260.4	261.4	40	1-T-3800-16-40X40	1-T-3800-16-40	2-T-3800-16-40
			45		1-T-3800-16-45	2-T-3800-16-45
			50		1-T-3800-16-50	2-T-3800-16-50
			60		1-T-3800-16-60	2-T-3800-16-60
			65		1-T-3800-16-65	2-T-3800-16-65