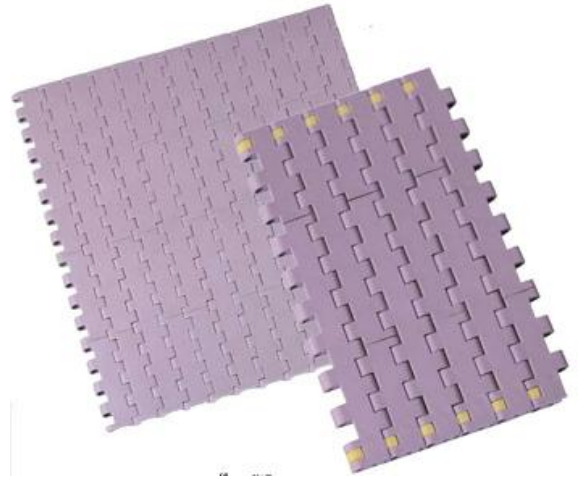


T-400PB Flat top modular belt

- Application: mainly for light conveying, plastic & glass bottles, packaging lines conveyor.
- Material: POM.
- Pin Material: PP
- Work temperature: -30°C ~ +90 °C
- Work Load: (POM)10500N
- Weight: POM 6.66kg/m²
- Color: Coffee or Blue



sprocket P117-119



parts P306-332

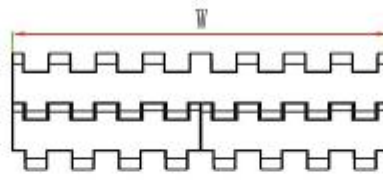


wear strip P355-359

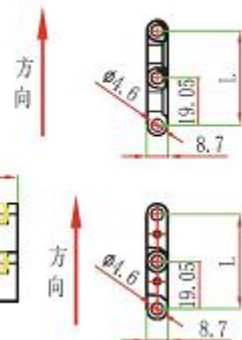
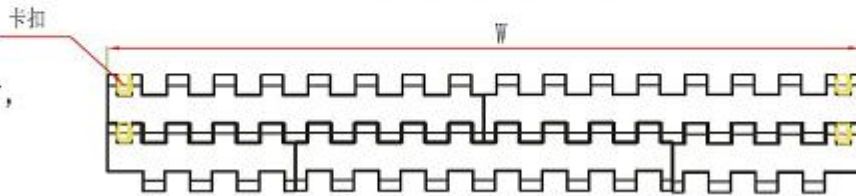


chain guide P343-354

- $W < 228.6$ 时,
网带拼图;



- $W \geq 228.6$ 时,
网带拼图;



Standard Width: : $W=76.2*N$

Non-standard Width: $W=76.2*N+19*n$

W (mm)	76.2	152.4	228.6	304.8	381	457.2	533.4	609.6	685.8	76.2*N
--------	------	-------	-------	-------	-----	-------	-------	-------	-------	--------

Remarks: N, n is the multiples of integers, when design or purchase the belt, please contact the sales first to confirm the actual width.

T-400MC with friction surface modular belt

- Application: mainly used for the conveying product need higher friction;
- Material: POM.
- Pin Material: PP
- Work temperature: -30°C ~ +90 °C
- Work Load: (POM)10500N



sprocket P117-119



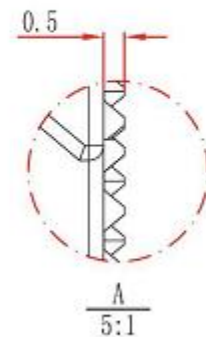
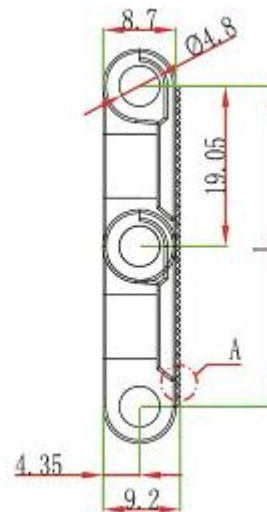
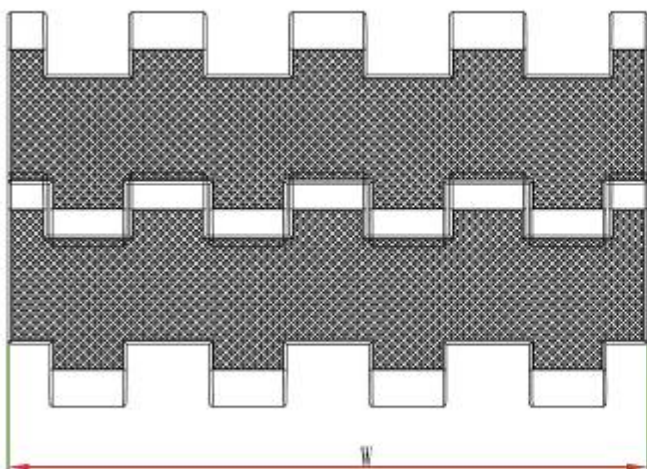
parts P306-332



wear strip P355-359



chain guide P343-354



Standard Width: : $W=76.2*N$

Non-standard Width: $W=76.2*N+19*n$

W (mm)	76.2	152.4	228.6	304.8	381	457.2	533.4	609.6	685.8	76.2*N
--------	------	-------	-------	-------	-----	-------	-------	-------	-------	--------

Remarks: N, n is the multiples of integers, when design or purchase the belt, please contact the sales first to confirm the actual width.

T-400TL Raised rib modular belt

- Application: mainly for light conveying, plastic & glass bottles, packaging lines conveyor.
- Material: POM.
- Pin Material: PP
- Work temperature: -30°C ~ +90 °C
- Work Load: (POM)10500N



sprocket P117-119



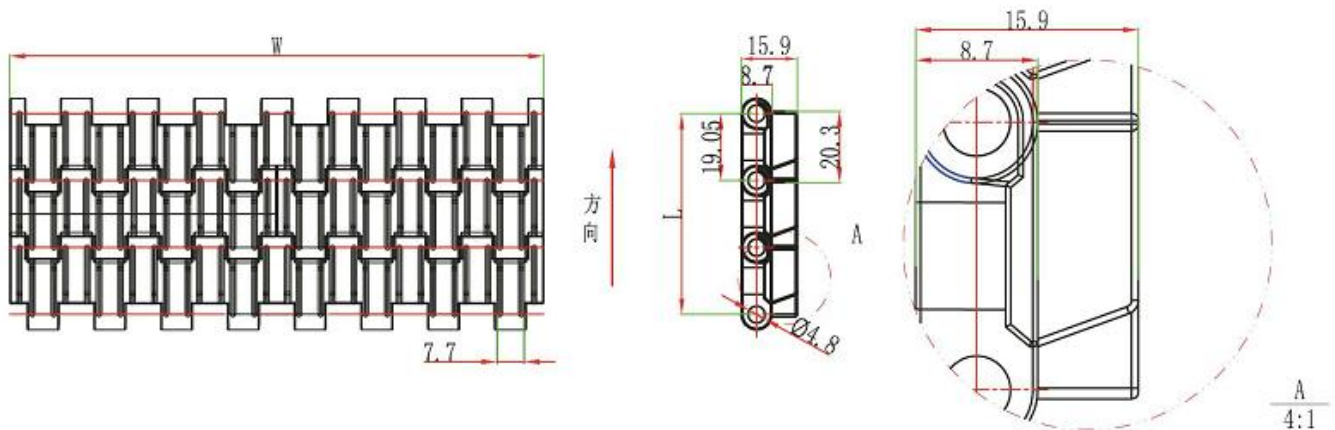
parts P306-332



wear strip P355-359



chain guide P343-354



Standard Width: : $W=76.2*N$

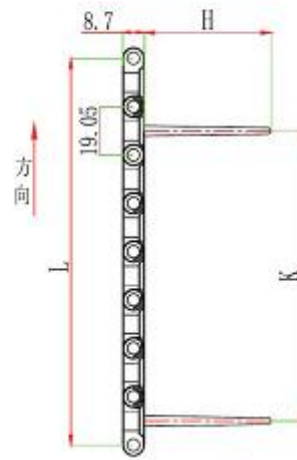
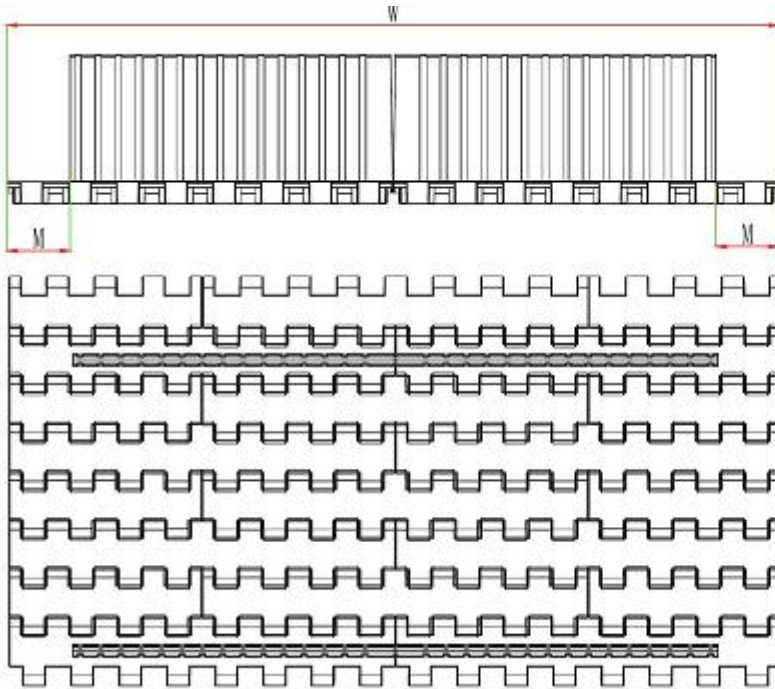
Non-standard Width: $W=76.2*N+19*n$

W (mm)	76.2	152.4	228.6	304.8	381	457.2	533.4	609.6	685.8	76.2*N
--------	------	-------	-------	-------	-----	-------	-------	-------	-------	--------

Remarks: N, n is the multiples of integers, when design or purchase the belt, please contact the sales first to confirm the actual width.

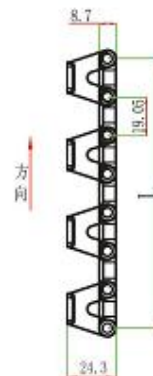
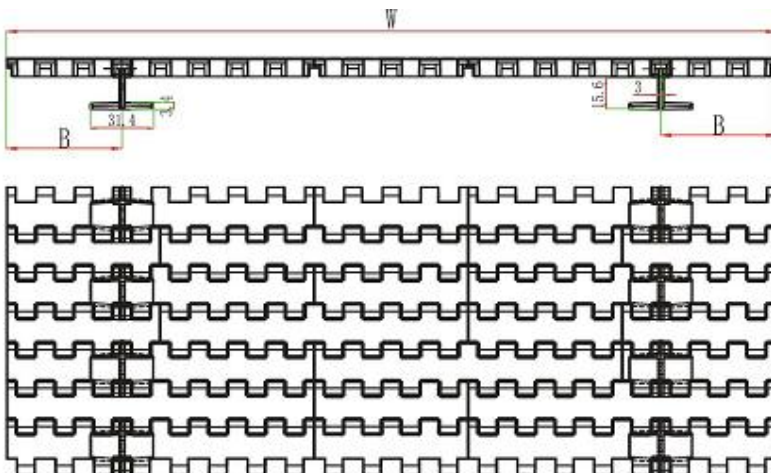
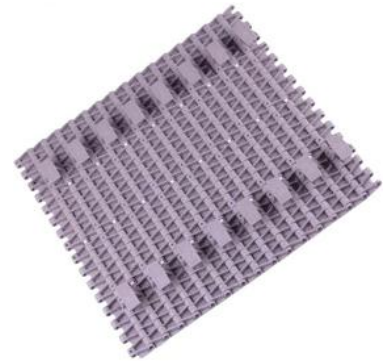
T-400A modular belt with flight

- Mainly used for all kinds of food industry, and packaging line conveyor machine.
- Flight standard height H: 10, 20, 25, 30, 40, 50, 75mm;
- The distance between flight and belt side M: 25, 30, 35, 40, 45, 50mm;



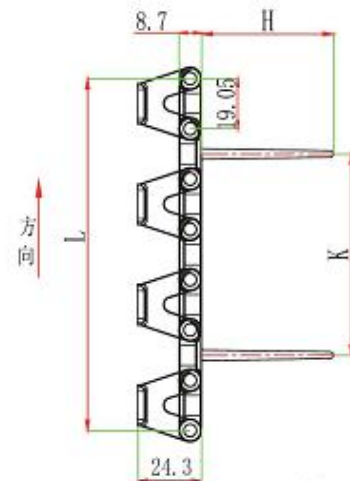
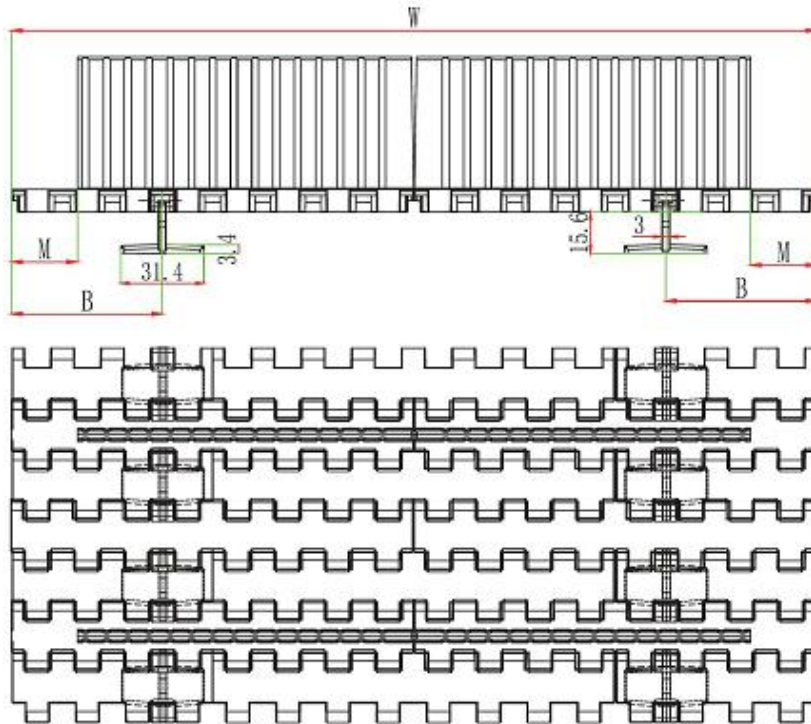
T-400B modular belt with positrack

- It is suitable for all kinds of food industry, and other packaging line conveyors.
- Exactly position by positrack
- The positrack and belt side distance: $B=38.1+9.5*n$



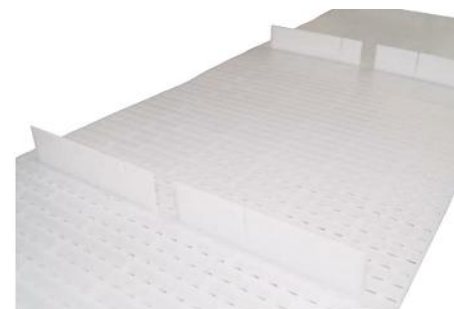
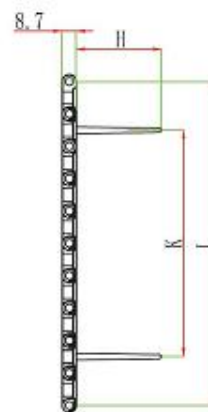
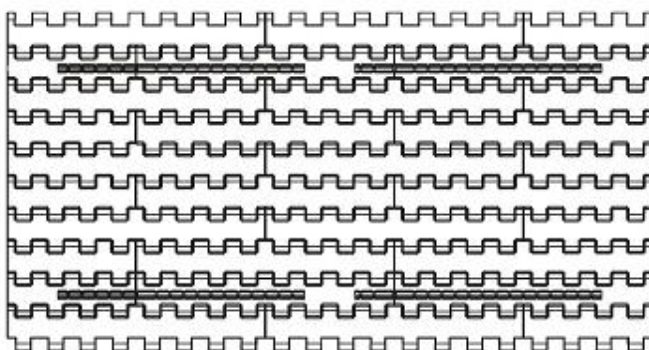
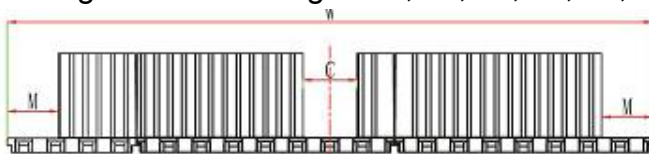
T-400C modular belt with flight and positrack

- It is suitable for all kinds of food industry, and other packaging line conveyors.
- The positrack and belt side distance: $B=38.1+9.5*n$;
- The flight standard height: 10, 20, 25, 30, 40, 50, 75mm;
- The flight and belt side distance M: 25, 30, 35, 40, 45, 50mm.



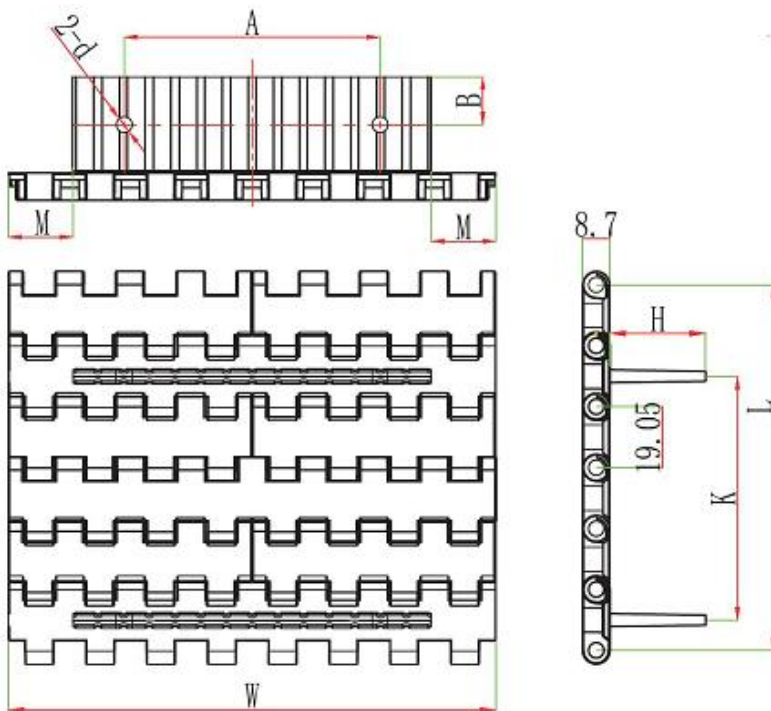
T-400D modular belt with gap flight

The flight standard height: 10, 20, 25, 30, 40, 50, 75mm



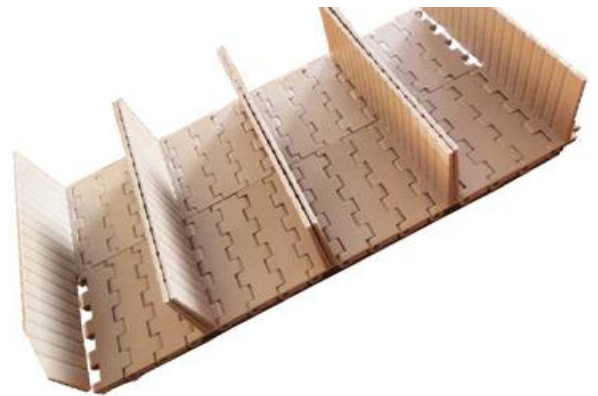
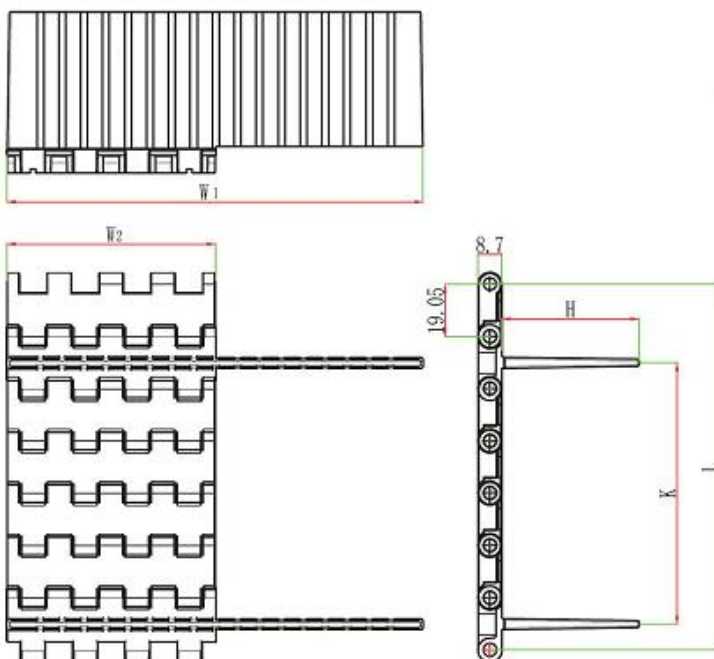
T-400E modular belt with hole flight

- It is suitable for all kinds of food industry, and other packaging line conveyors.
- The flight standard height: 10, 20, 25, 30, 40, 50, 75mm;
- The flight and belt side distance M: 25, 30, 35, 40, 45, 50mm.



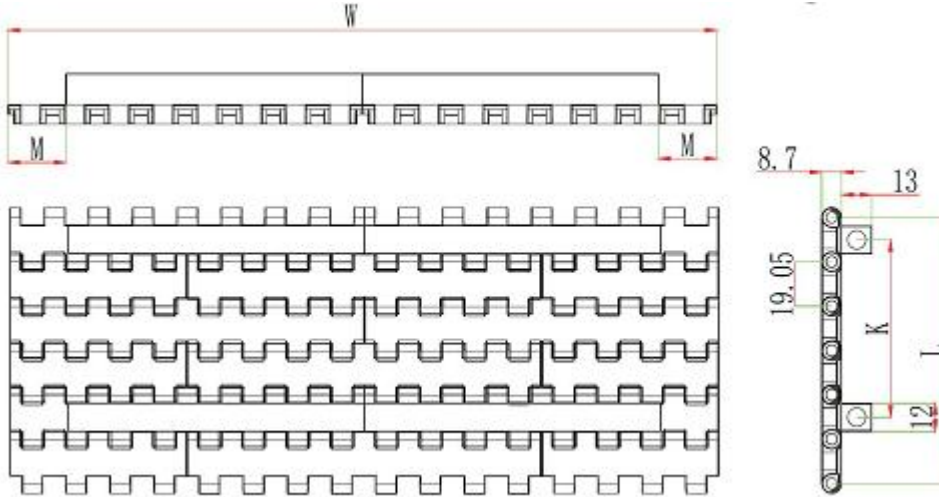
T-400F modular belt with flight

- Mainly used for cartoning machine
- Pin material: ss201
- Work load: 800N, Weight: 0.88kg/m
- $W1 \geq 152.4\text{mm}$, $W2 \leq 57.15/76.2\text{mm}$, $H \leq 50\text{mm}$



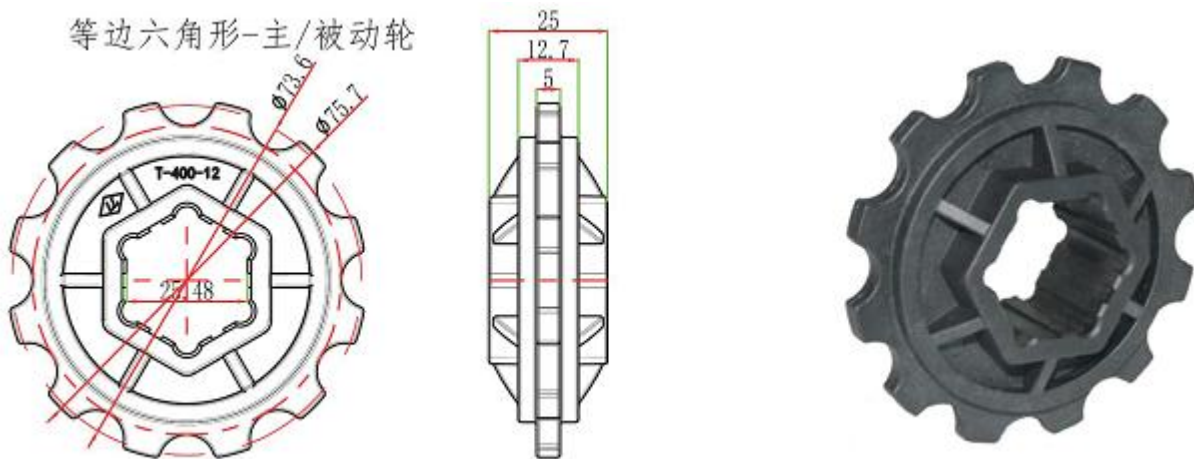
T-400F modular belt with strengthen flight

Mainly used for bottle cap conveying.
 Can choose ss or plastic rod to strengthen the flight hole.



T-400 molded injection sprocket

Suitable for T-300, T-400
 Raw material: nylon PA6



Teeth	Pitch diameter(mm)	Outer diameter(mm)	Bore size (mm)	Sprocket model hexagon
12	73.6	75.7	25.48	3-T-400-12-25.4-6